

An annotated checklist of the butterflies (Lepidoptera: Papilionoidea) of Cambodia

Gerard CHARTIER^{1,*} & Oleg E. KOSTERIN²

¹ No. 467, Boeung Toteung Tngai, Daeum Kor, Chrouy Changva, Phnom Penh, Cambodia, 121001.

² Institute of Cytology & Genetics, Russian Academy of Sciences (Siberian Branch), Academician Lavrent'yev Avenue, 10, Novosibirsk, Novosibirsk Oblast, Russia, 630090.

* Corresponding author. Email gee@geenature.com

Paper submitted 24 April 2022, revised manuscript accepted 1 October 2022.

មូលនិយសង្ខេប

យើងបានផ្តល់ជូននូវបញ្ជីឈ្មោះសត្វមេអំបៅសរុបចំនួន ៥១២ប្រភេទ ដែលត្រូវបានគេអះអាងថាមានវត្តមាននៅក្នុងប្រទេសកម្ពុជា។ បញ្ជីឈ្មោះសត្វមេអំបៅទាំងនេះត្រូវបានចងក្រងឡើងដោយប្រមូលព័ត៌មានពីឯកសារអត្ថបទវិទ្យាសាស្ត្រ ពីសំណាកមានលេខកូដសម្គាល់ និងពីប្រភពអនឡាញ ដែលរួមបញ្ចូលទាំងទិន្នន័យវិទ្យាសាស្ត្រ និងរូបថតភស្តុតាងរបស់យើងផ្ទាល់។ សត្វមេអំបៅចំនួន៩០ប្រភេទ និងពួកចំនួន០៣បន្ថែម ត្រូវបានកត់ត្រាជាលើកដំបូងសម្រាប់ប្រទេសកម្ពុជា ហើយក្នុងនោះដែររូបថតភស្តុតាងក៏ត្រូវបានផ្តល់ជូនសម្រាប់ប្រភេទនិងពួកនៃសត្វមេអំបៅដែលទើបនឹងត្រូវបានកត់ត្រាថ្មីៗ។

Abstract

We present an annotated checklist of 512 butterfly species currently confirmed in the territory of Cambodia. The checklist was compiled from literature information, voucher specimens and online resources, including citizen science data and our own photographic evidence. Ninety species and three additional genera are recorded for the first time for Cambodia and photographic evidence is provided for all newly reported species and genera.

Keywords butterflies, Cambodia, checklist, fauna, Indochina, Lepidoptera, Papilionoidea.

Introduction

Butterflies are conspicuous and beautiful insects which attract much attention from scientists and the public and so are usually the best studied insects in any area. They are also considered to be useful indicators of habitat quality (Fleishman & Murphy, 2009). Despite this and partly due to the country's troubled history during much of the 20th century, few dedicated investigations were undertaken on Cambodian butterflies until recently. Prior to the 1970s, relatively few publications documented butterflies in the country (Boullet & Le Cerf, 1912; Fruhstorfer, 1913, 1914; Dubois & Vitalis, 1914, 1919, 1921, 1924; Cowan, 1967), whereas more recently, there were two expeditions by

Onodera (2007, 2008, 2009) and studies in Phnom Samkos Wildlife Sanctuary in 2006 and 2010 (Monastyrskii *et al.*, 2011). Other literature devoted to butterflies of Cambodia is scarce and includes a popular photographic album of the butterflies of southwest Cambodia by Woodfield & Murton (2006), which was the result of prolonged work by Frontier UK/Cambodia, a report on the genus *Hidari* Distant, 1886 (Chartier, 2019) and three communications reporting photographic records of butterflies made during odonatological surveys undertaken by Kosterin (2019a, 2019b, 2020).

The most comprehensive source of information on Indochinese butterflies is currently the website ('A Check

CITATION: Chartier, G. & Kosterin, O.E. (2022) An annotated checklist of the butterflies (Lepidoptera: Papilionoidea) of Cambodia. *Cambodian Journal of Natural History*, 2022, 99–126.

List of Butterflies of Indo-China, chiefly from Thailand, Laos and Vietnam') maintained by Inayoshi (2022). However, as follows from its title, Cambodia is not of primary concern and because the frequency of updates varies greatly between species, some papers on Cambodian butterflies have yet to be included, while others have only been partly adopted (e.g., Monastyrskii *et al.*, 2011). Additionally, records of butterflies made by the first author between 2010 and 2020 in the foothills of the Cardamom Mountains near Tatai village in Koh Kong Province have yet to be published. No checklist of butterflies in Cambodia is yet available. This information gap motivated us to compile a checklist based on the latest information available, so as to encourage further research. This is particularly important given the continued loss and degradation of natural forest habitats in Cambodia. At a minimum, further study based on voucher specimens is needed to verify observational records we have omitted due to these being of genera which cannot be reliably identified from photographic records alone.

Methods

In the absence of systematic research efforts on butterflies in Cambodia, our checklist was compiled from as many information sources as possible. The quality and reliability of these varied, with the most reliable being scientific publications based on voucher specimens. Most records of butterflies in Cambodia are referenced for each Indochinese country by Inayoshi (2022), which was our main source for literature and distribution information.

Records based on photographic evidence alone were regarded as less reliable although still useful. This approach avoids the need for voucher specimens and allows most species to be reliably identified, with the notable exception of taxa in genera such as *Jamides* Hübner, [1819], *Nacaduba* Moore, [1881], *Melanitis* Fabricius, 1807, *Mycalopsis* Hübner, [1819], *Ypthima* Hübner, [1819], *Potanthus* Scudder, 1872 and *Telicota* Scudder, 1872, among others. Species were identified from photographs using a variety of keys (Evans, 1927, 1949, 1957; Corbet, 1941; Eliot, 1990; Seki *et al.*, 1991; Corbet & Pendlebury, 1992) and with assistance from Tek Lin Seow. Photographic records of butterflies in Cambodia have rapidly accumulated in recent years through online citizen science platforms such as iNaturalist (2022) and also appear on more mainstream platforms such as Facebook. The latter is not as convenient for accumulating scientific data as it does not allow full context searches. For this reason, we encouraged the authors of interesting photographic

records (the most prolific of whom was E. Smith) to also contribute these to iNaturalist. Nevertheless, some photographic records only remain available on personal sites or Facebook pages e.g., Jump (2022). All observations of butterflies available on the aforementioned platforms were reviewed by us. Photographs of all species reported for Cambodia for the first time were used with the permission of their owners or according to the creative commons licenses (CC BY NC or CC BY) under which these are deposited in iNaturalist (2022).

We carefully reviewed the publications of Kosterin (2019a, 2019b, 2020) for errors and these were addressed in the present study. First, Kosterin (2020) re-identified three species from Kosterin (2019a) as follows: *Arhopala aedias merittas* Corbet, 1941 as *A. camdana* Corbet, 1841; *Nacaduba cf. berenice aphyia* (Fruhstorfer, 1916) ('cf.' was used by Kosterin to indicate provisional identifications) as *Ionolyce helicon merguiana* (Moore, 1882) and *Notocrypta clavata theba* (Evans, 1949) as *N. paralyos asawa* Fruhstorfer, 1911. Second, *Pelopidas cf. mathias* (Fabricius, 1798) from Kosterin (2019b) was re-identified as *Borbo cinnara* (Wallace, 1866). Third, Kosterin (2019b) expressed doubts regarding the identification of *Arhopala elopura* Druce, 1774 from Kep Province in Kosterin (2019a: Fig. 22) but nonetheless provided a photograph of the species from Monduliri Province (Kosterin 2019b: Fig. 11).

Further corrections were kindly provided by Yutaka Inayoshi who made the following revisions to Kosterin (2019a): *A. elopura* was regarded as *A. aida* Nicéville, 1889, *Lasippa tiga siaka* (Moore, 1881) as *L. camboja* (Moore, 1879), *Euploea phaenareta drucei* Moore, 1883 as *E. phaenareta catselnaui* C. & R. Felder, 1865 and *Pyronera* sp. as *P. margherita miriam* (Evans, 1941). Nine species were also rejected as not being reliably identifiable from photographs (*Poritia cf. erycinoides elisei* Evans, 1925, *Miletus cf. chinensis learchus* C. & R. Felder, 1862, *Arhopala avatha* Nicéville, *Nacaduba cf. pavana vajuva* Fruhstorfer, 1916, *N. cf. sanaya naevia* Toxopeus, 1929, *N. cf. subperusia lysa* Fruhstorfer, 1916, *Halpe cf. hauxwelli* Evans, 1937, *Halpe zola zola* Evans, 1937 and *Pelopidas cf. subochraceus barneyi* (Evans, 1937)), whereas the provisional identification of *Allotinus unicolor rekkia* Riley & Godfrey, 1921 was confirmed.

The following revisions were made to Kosterin (2019b): *Poritia cf. hewitsoni tavoyana* Doherty, 1889 was regarded as *P. erycinoides elisei*, whereas the provisional identification of *Virachola kessuma* (Horsfield, 1829) was confirmed. Three species were also rejected as not being reliably identifiable from photographs: *Aeromachus* cf.

pygmaeus (Fabricius, 1775), *Pelopidas* cf. *mathias mathias*, and *Rapala* cf. *dieneces* (Hewitson, [1878]).

For Kosterin (2020), three species were rejected (*Rapala* cf. *dieneces*, *Arhopala aurelia* Nicéville, 1889 and *Ideopsis similis persimilis* (Moore, 1879)), *Prosotas aluta* ssp. was regarded as *Prosotas aluta coelestis* (Wood-Mason & Niceville, [1887]), and *Poritia hewitsoni tavoyana* was confirmed.

All photographs included in this study were reviewed by Yutaka Inayoshi, Adam Cotton and three anonymous reviewers. All species and subspecies that were deemed as not identifiable with certainty from photographs were omitted from the checklist, with exceptions for three genera: *Thauria* sp., *Dacalana* sp. and *Baoris* sp.

Results

The primary result of our review is presented in Annex 1 which lists 512 butterfly species currently reported for Cambodia (Table 1). Two of these species have records of two subspecies within the country: *Atrophaneura varuna* (White, 1842), ssp. *astorion* (Westwood, 1842) and ssp. *zaleucus* (Hewitson, [1865]), and *Capila phanaeus* (Hewitson, 1867), ssp. *decoloris* Inoué & Kawazoe 1964 and ssp. *falta* Evans, 1949.

Of the 512 species listed in Annex 1, 90 species (one with two subspecies) are reported for the first time for Cambodia (Table 1). In addition, three genera for which we are unable to determine specific identifications are included because the generic identification is certain: *Thauria* Moore, 1894, *Dacalana* Moore, 1884 and *Baoris* Moore, 1881. All of the newly reported species and genera are depicted in Figs 1–9.

Discussion

The 512 butterfly species we document for Cambodia is less than half the 1,291 species reported for neighbouring Thailand by Ek-Amnuay (2012). This can be attributed to Cambodia being a relatively small country latitudinally whereas Thailand is so extended that its fauna includes Malesian species in the south and Burmese species in the north. Additionally, Cambodia is a predominantly low-lying country with not so many mountains, which are biodiversity hotspots. However, judging by the speed which the known butterfly fauna of Cambodia increased with new records in the recent years preceding the pandemic, and considering the popularity of butterflies in wildlife photography, our list undoubtedly remains incomplete and will surely continue to grow in the near

Table 1 Summary counts of butterfly species in Cambodia by family and subfamily.

Family/Subfamily	No. of Species Documented	Newly Reported Species
Papilionidae	32	2
Pieridae	34	
Pierinae	20	
Coliadinae	14	
Nymphalidae	179	15
Danainae	28	
Satyrinae	51	4
Charaxinae	9	2
Heliconiinae	15	2
Limenitinae	48	5
Cyrestinae	5	
Pseudergolinae	1	
Biblidinae	3	
Apaturinae	2	
Nymphalinae	15	1
Lybitheinae	2	1
Riodinidae	11	3
Lycaenidae	161	25
Poritinae	3	1
Miletinae	8	3
Curetinae	3	
Polyommatainae	58	7
Lycaeninae	1	
Aphnaeinae	3	
Theclinae	85	14
Hesperiidae	95	45
Coeliadinae	15	8
Pyrginae	19	8
Hesperiinae	61	29
Total	512	90

future. There are still many species recorded in the neighbouring territories of Thailand, Laos and Vietnam that have yet to be recorded in Cambodia (Inayoshi, 2022). Given the distribution of existing records in these countries (Inayoshi, 2022), none of the 90 species we report as new for Cambodia can be considered surprising. These are skewed toward Hesperidae, which likely reflects the fact that previous studies presumably concentrated more on other butterfly families.

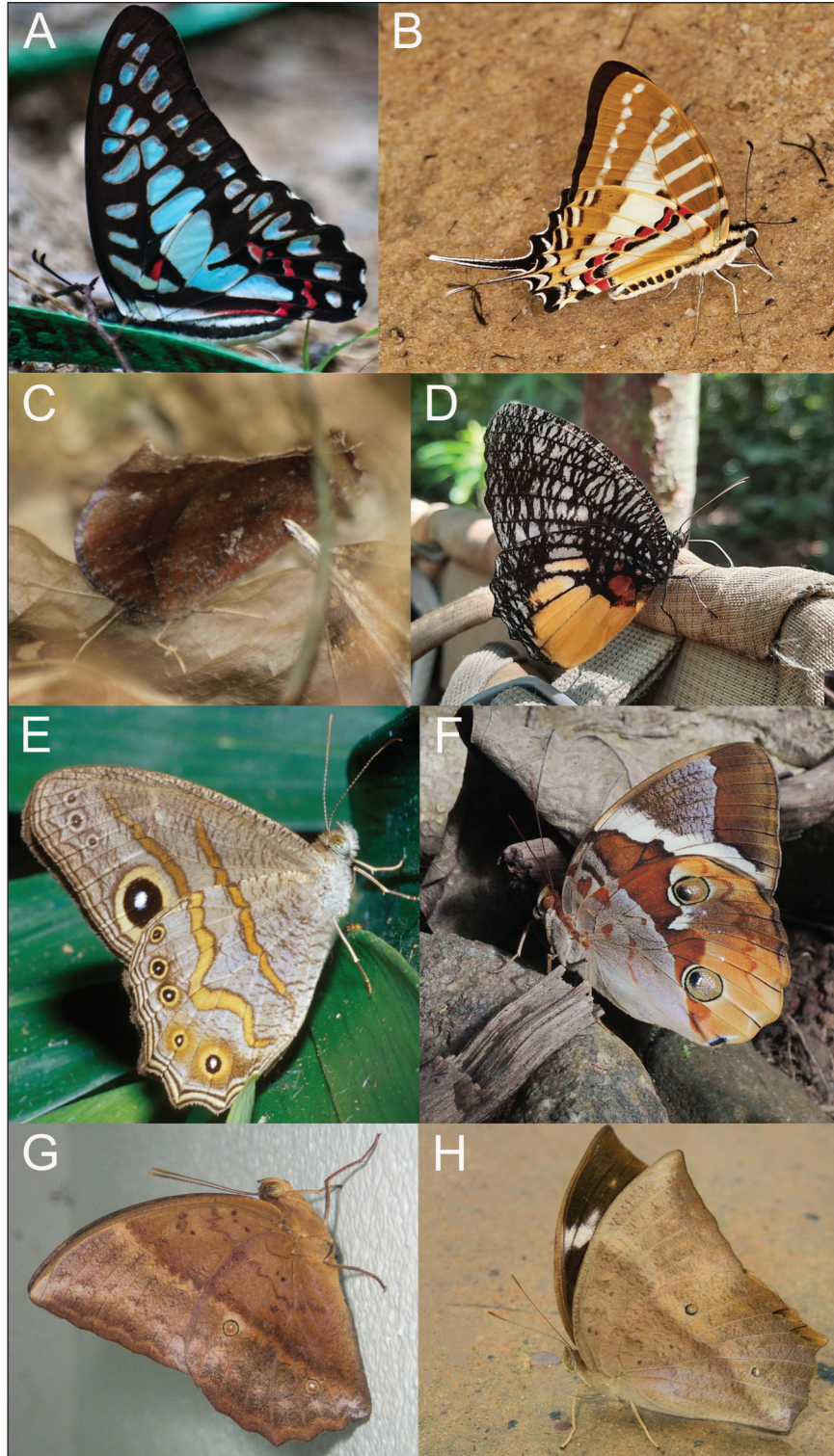


Fig. 1 First records of Papilioninae and Satyrinae taxa in Cambodia: A) *Graphium eurypylus acheron*, Koh Kong, 28.08.2012; B) *G. nomius swinhoei*, Siem Reap, 7.02.2021; C) *Melanitis phedima ganapati*, Stueng Treng, 28.01.2021; D) *Elymnias vasudeva*, Mondulkiri, 5.11.2020; E) *Erites medura rotundata*, Kratie, 5.11.2020; F) *Thauria* sp., Kampong Speu, 9.10.2014; G) *Discophora sondaica zal* ♂, Koh Kong, 31.07.2016; H) *D. s. zal* ♀, Koh Kong, 29.06.2018. A, G, H by G. Chartier; B by E. Smith; C by C. Jones; D by K. Winney; E by H. Böckler; F by D. Jump. Licenses: D - CC BY NC; F - used with kind permission of author; Others - CC BY. Not to scale.

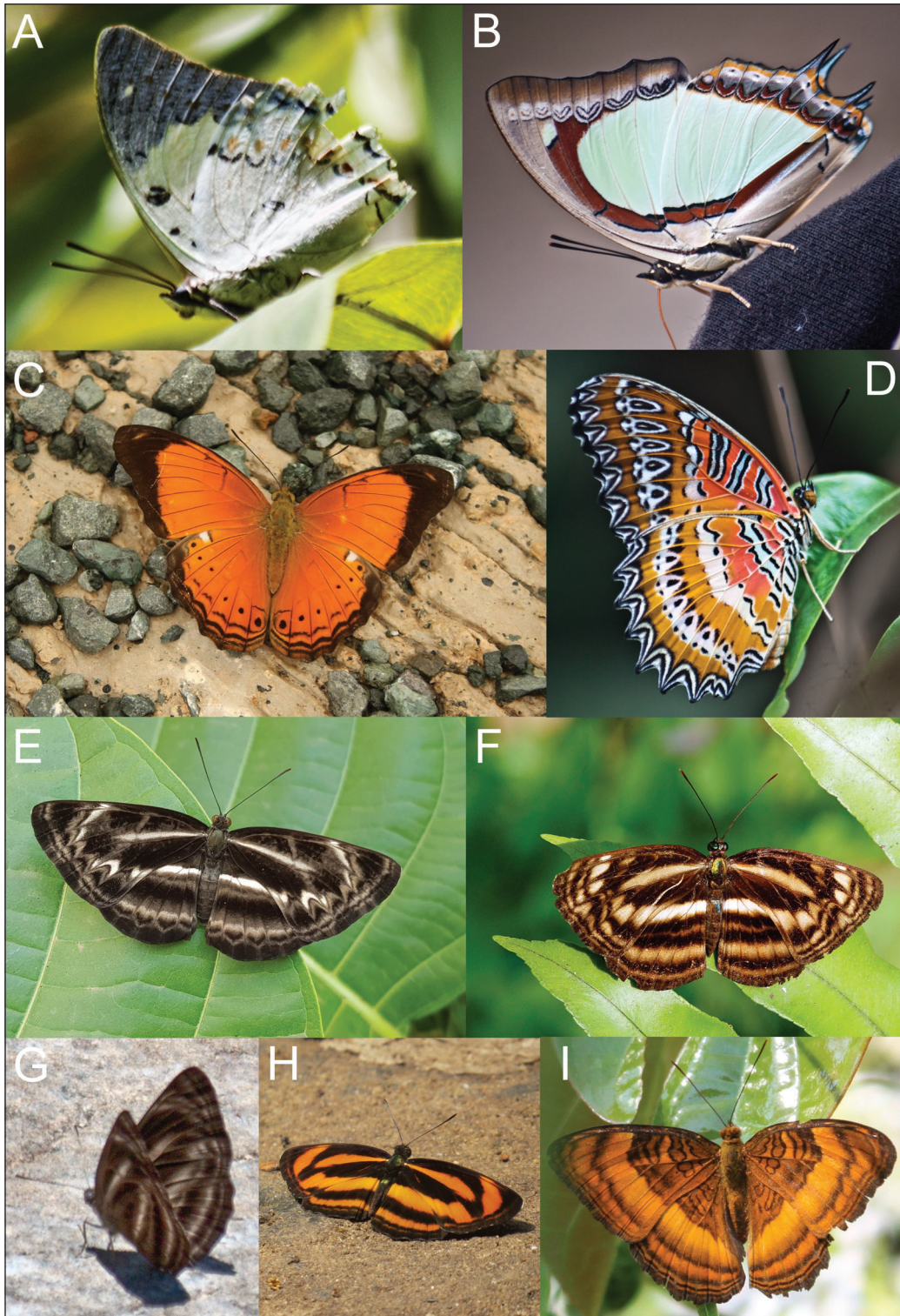


Fig. 2 First records of Charaxinae, Heliconiinae and Limenitinae taxa in Cambodia: A) *Polyura delphis delphis*, Koh Kong, 10.04.2012; B) *P. jalysus jalysus*, Koh Kong, 15.02.2012; C) *Cirrochroa emalea emalea*, Pursat, 15.07.2020; D) *Cethosia biblis biblis*, Koh Kong, 23.08.2012; E) *Lasippa monata monata*, Siem Reap, 31.01.2015; F) *Neptis harita preeyai*, Siem Reap, 26.04.2021; G) *N. ilira cindia*, Koh Kong, 9.01.2012; H) *N. miah nolana*, Siem Reap, 26.02.2014; I) *Athyma sinope sinope*, Koh Kong, 1.01.2011. A, B, D, G, I by G. Chartier; C by Srun S.; E by E. Smith; F by D. Jump; H by Y. Bas. Licenses: F - used with kind permission of author, H - CC BY NC; Others - CC BY. Not to scale.

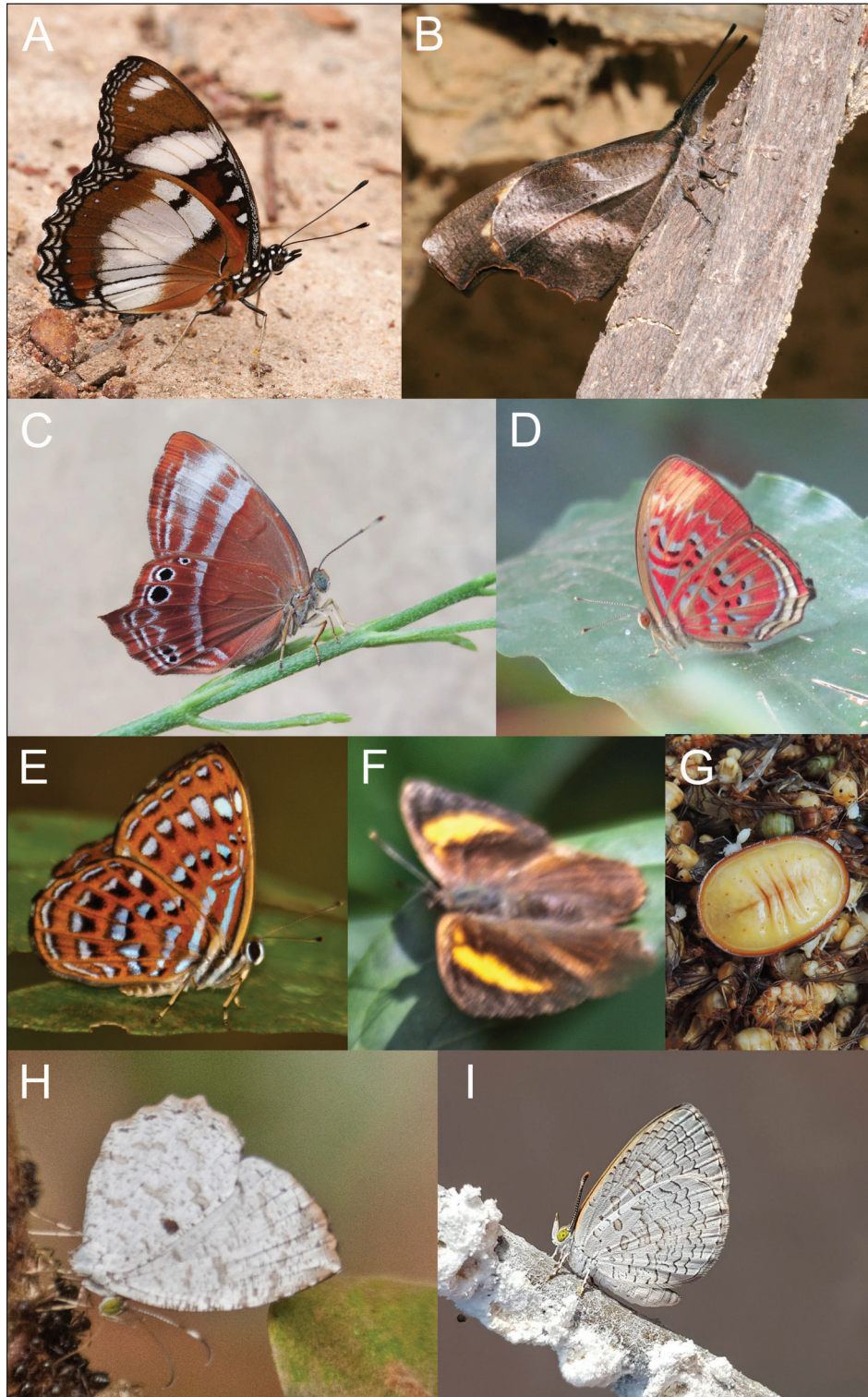


Fig. 3 First records of Nymphalinae, Lybitheinae, Riodinidae, Poritinae and Miletinae taxa in Cambodia: A) *Hipolymnas misippus*, Siem Reap, 21.07.2015; B) *Libythea myrrha sanguinalis*, Siem Reap, 13.06.2019; C) *Abisara saturata meta*, Siem Reap, 15.09.2013; D) *Paralaxita telesia bouletti*, Mondulkiri, 29.12.2019; E) *Laxita thuisto ephorus*, Koh Kong, 30.09.2012; F) *Simiskina phalia potina*, Koh Kong, 10.11.2012; G) *Liphyra brassolis brassolis*, Siem Reap, 24.04.2014; H) *Allotinus substrigosus substrigosus*, Koh Kong, 9.02.2019; I) *Spalgis epius epius*, Siem Reap, 9.08.2021. A, B by E. Smith; C, G, I by D. Jump; D by Srun S.; E, F, H by G. Chartier. Licenses: C, G, I - used with kind permission of author; D - CC BY NC; Others - CC BY. Not to scale.

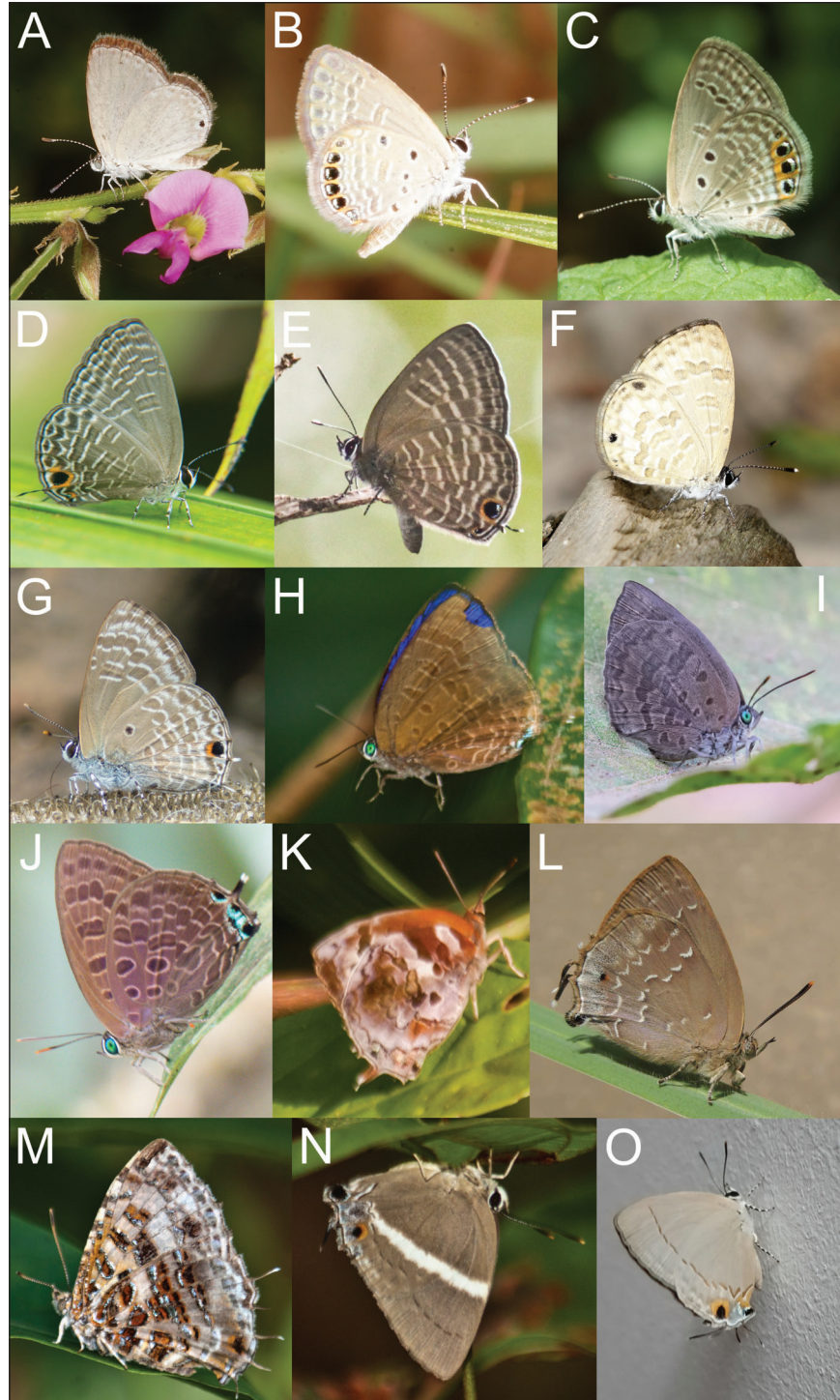


Fig. 4 First records of Polyommatainae and Theclinae (part) taxa in Cambodia: A) *Famegana nisa*, Siem Reap, 8.10.2019; B) *Freyeria putli*, Siem Reap, 28.05.2019; C) *F. trochylus orientalis*, Kandal, 24.06.2016; D) *Jamides bochus bochus*, Koh Kong, 12.11.2014; E) *Nacaduba pactolus continentalis*, Koh Kong, 4.09.2011; F) *Prosotas lutea sivoka*, Siem Reap, 16.03.2018; G) *Anthene lycaenina lycambes*, Koh Kong, 26.07.2016; H) *Arhopala milleri*, Koh Kong, 28.02.2012; I) *A. asinarus asinarus*, Siem Reap, 8.01.2020; J) *A. corinda corestes*, Koh Kong, 19.03.2014; K) *Flos asoka*, Koh Kong, 5.01.2014; L) *Zinaspia todara karennia*, Siem Reap, 14.10.2015; M) *Catapaecilma major albicans*, Koh Kong, 29.03.2012; N) *Dacalana* sp., Koh Kong, 29.03.2012; O) *Bullis buto buto*, Mondulokiri, 9.03.2021. A, B, F by E. Smith; C–E, G, H, J, K, M, N by G. Chartier; I by C.A. Lim; L by D. Jump; O by K. Winney. Licenses: I, O - CC BY NC; L - used with kind permission of author; Others - CC BY. Not to scale.

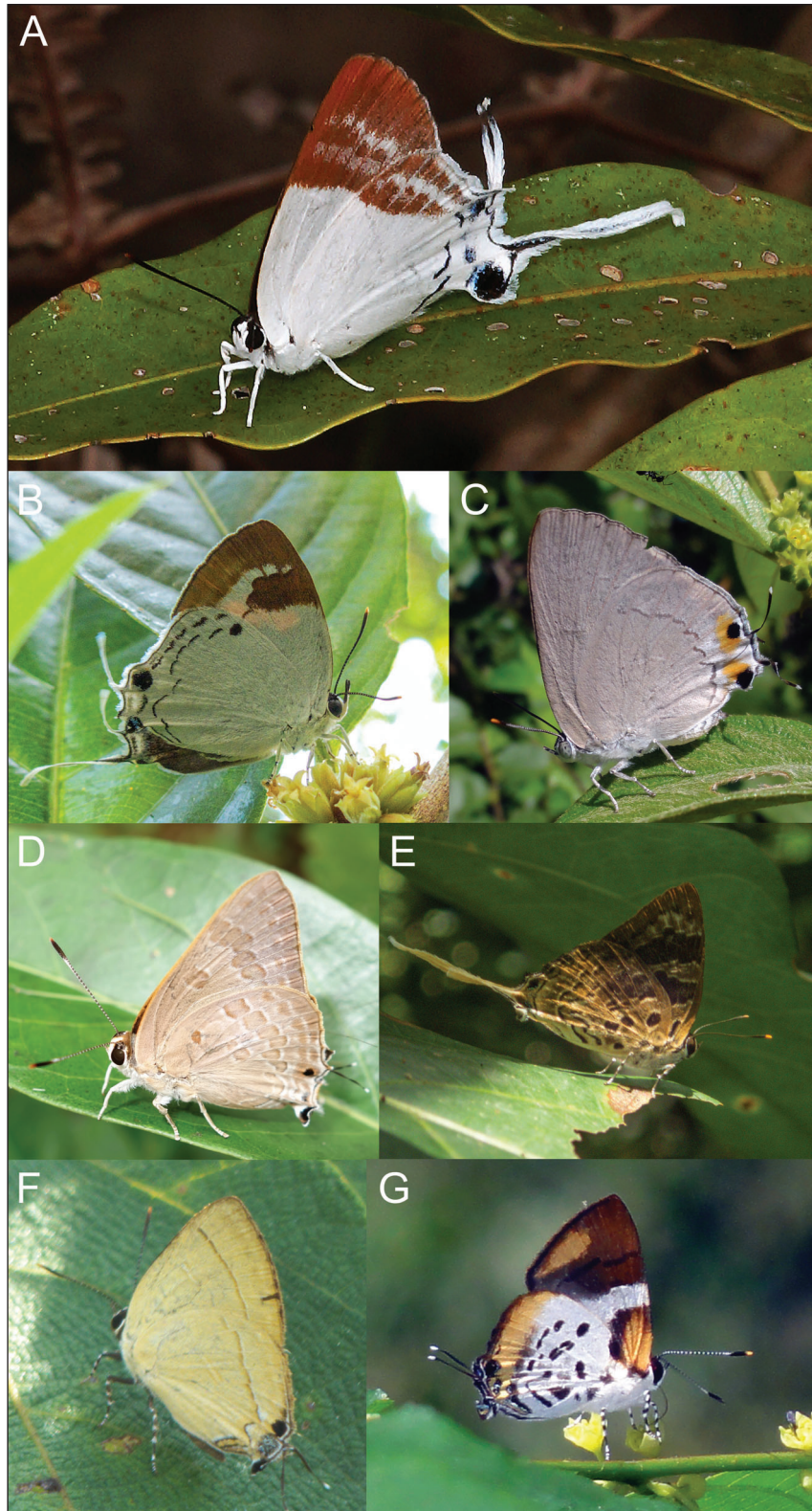


Fig. 5 First records of Theclinae taxa (part) in Cambodia: A) *Neocheritra fabronia fabronia*, Siem Reap, 15.12.2018; B) *Suasa lisides*, Koh Kong, 21.01.2014; C) *Ancema blanka minturna*, Siem Reap, 19.19.2014; D) *Virachola perse perse*, Siem Reap, 31.12.2016; E) *Bindahara phocides phocides*, Koh Kong, 31.07.2016; F) *Rapala suffusa suffusa*, Koh Kong, 11.05.2015; G) *Araotes lapithis lapithis*, Siem Reap, 19.09.2014. A, C, D, G by E. Smith; B, E, F by G. Chartier. Licenses: All - CC BY. Not to scale.



Fig. 6 First records of Coeliadinae and Pyrginae (part) taxa in Cambodia: A) *Burara jaina margana*, Koh Kong, 30.05.2013; B) *B. etelka etelka*, Koh Kong, 7.08.2011; C) *B. gomata gomata*, Siem Reap, 5.09.2020; D & E) *Bibasis mahintha*, Siem Reap, 9.03.2021; F) *Hasora schoenherr gaspa*, Koh Kong, 1.06.2012; G) *H. badra badra*, Koh Kong, 18.11.2017; H) *H. vitia indica*, Koh Kong, 3.01.2012; I) *H. leucospila leucospila* ♂, Koh Kong, 7.01.2015; J) *Capila phanaeus decoloris*, Siem Reap, 1.08.2021; K) *C. phanaeus falta*, Koh Kong, 20.03.2012; L) *C. hainana hainana* ♀, Koh Kong; 10.04.2012; M) *C. hainana hainana* ♂, Koh Kong, 15.03.2012; N) *Coladenia indrani uposathra*, Siem Reap, 5.11.2014; O) *Chamunda chamunda*, Koh Kong, 26.09.2013; P) *Gerosis bhagava bhagava*, Siem Reap, 14.08.2019. A, B, F-I, K-M, O by G. Chartier; C-E, J by D. Jump; N by E. Smith; P by Srun S. Licenses: P - CC BY NC; C-E, J - used with kind permission of author; Others - CC BY. Not to scale.

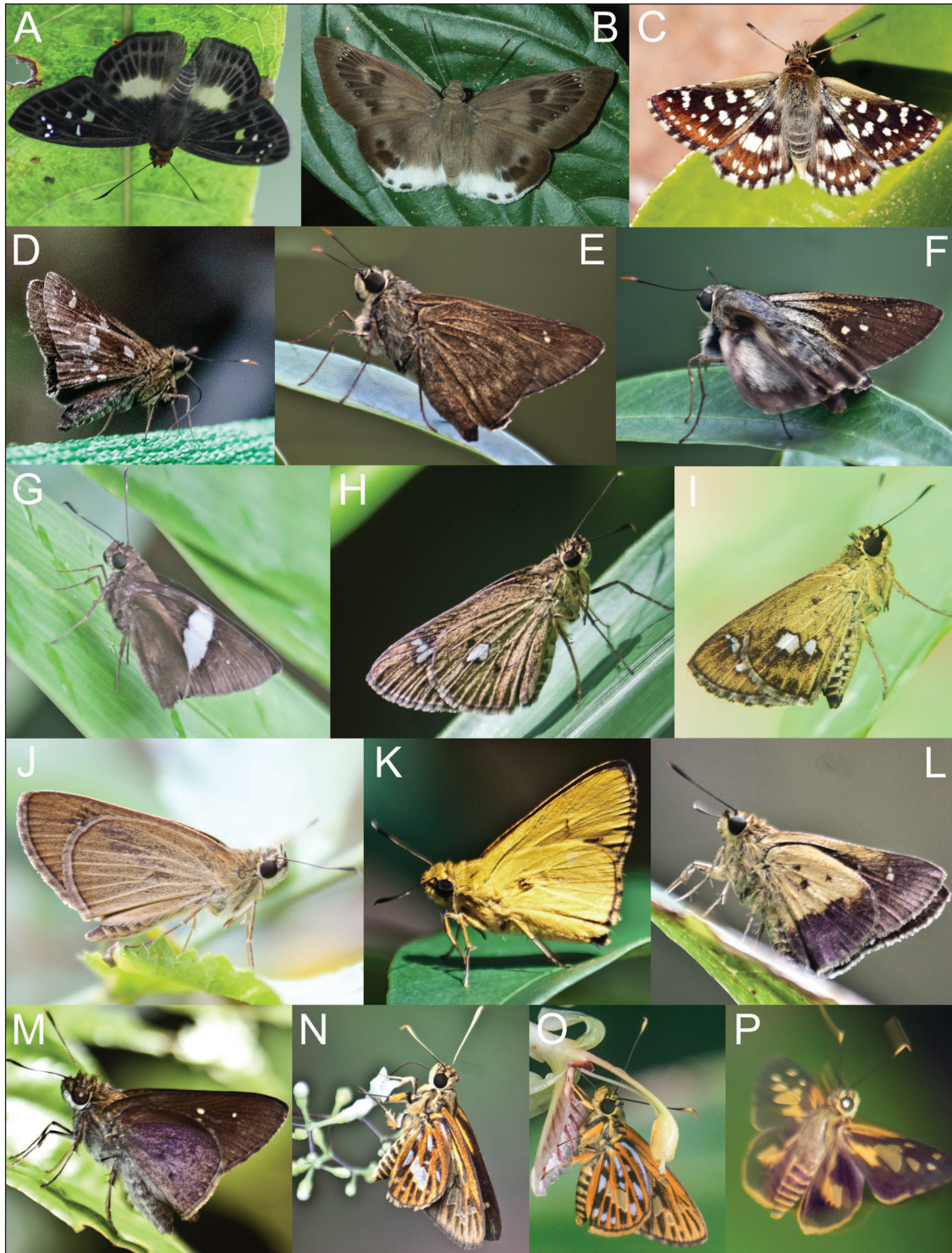


Fig. 7 First records of Pyrginae (part) and Hesperinae (part) taxa in Cambodia: A) *Gerosis limax dirae*, Koh Kong, 27.01.2011; B) *Tagiades parra gala*, Koh Kong, 21.11.2019; C) *Spialia galba chenga*, Siem Reap, 23.12.2014; D) *Thoessa cerata*, Mondulkiri, 22.09.2022; E & F) *Pithauria stramineipennis stramineipennis*, Koh Kong, 30.06.2012; G) *Notocrypta clavata theba*, Koh Kong, 18.02.2012; H) *Scobura phiditia*, Koh Kong, 26.09.2013; I) *S. isota*, Koh Kong, 25.07.2014; J) *Suada swerga suava*, Koh Kong, 15.01.2011; K) *Cupitha purreea*, Koh Kong, 10.04.2012; L) *Zographetus satwa*, Koh Kong, 14.07.2013; M) *Isma protoclea bicolor*, Siem Reap, 6.09.2012; N) *Pyrroneura callineura natalia*, Koh Kong, 22.09.2012; O & P) *P. margherita miriam*, Koh Kong, 17.06.2019. A & B, E–P by G. Chartier; C by E. Smith. Licenses: CC BY; D - Y. Bigant CC BY NC. Not to scale.

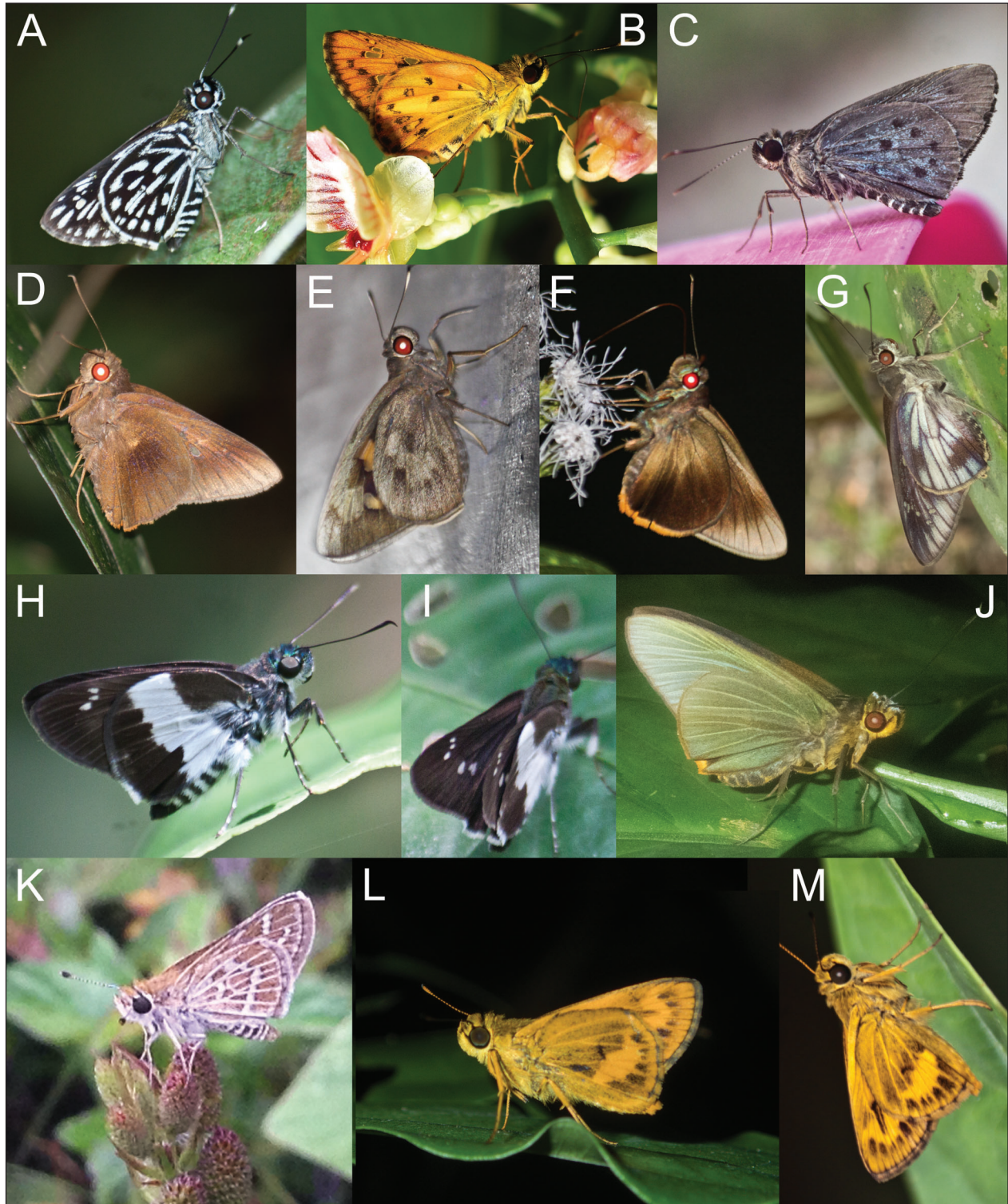


Fig. 8 First records of Hesperinae (part) taxa in Cambodia: A) *Plastingia naga*, Koh Kong, 3.11.2012; B) *Salanoemia tavoyana*, Siem Reap, 10.08.2018; C) *Salanoemia sala*, Koh Kong, 5.11.2013; D) *Zela zeus optima*, Koh Kong, 23.06.2014; E) *Erionota acroleuca apicalis*, Koh Kong, 7.07.2011; F) *Matapa cresta*, Koh Kong, 18.12.2011; G) *Unkana ambasa attina*, Koh Kong; 16.05.2018; H & I) *Acerbas anthea pista*, Koh Kong, 17.03.2012; J) *Pirdana distanti spenda*, Koh Kong; 10.12.2018; K) *Taractrocera maevius sagara*, Preah Sihanouk, 12.09.2020; L) *Oriens gola pseudolus*, Koh Kong, 1.03.2017; M) *O. gola pseudolus*, Koh Kong, 23.08.2013. A, C–J, L, M by G. Chartier; B by E. Smith; K by D. Snow. Licenses: K - CC BY NC; Others - CC BY. Not to scale.

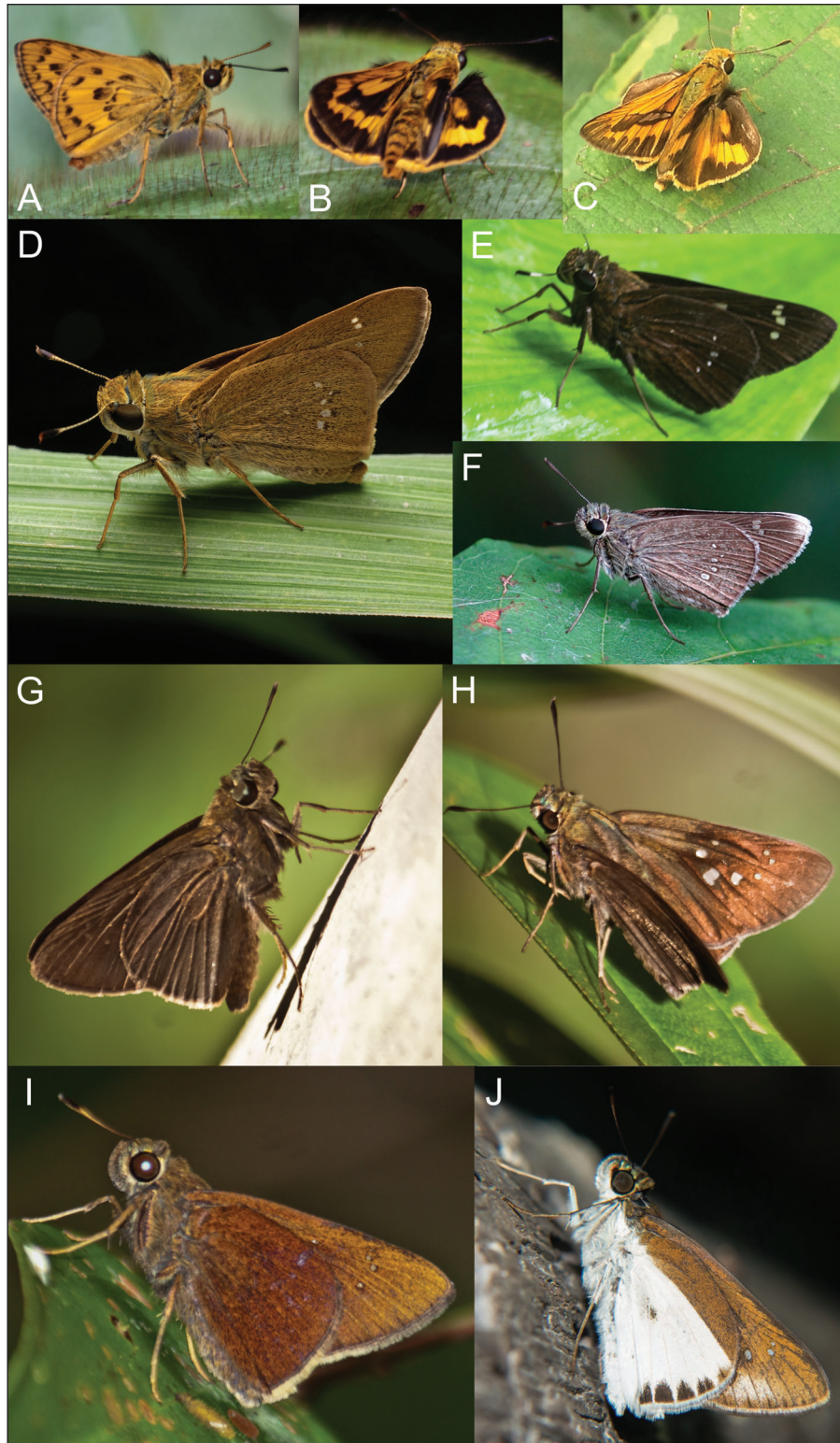


Fig. 9 First records of Hesperinae (part) taxa in Cambodia: A & B) *Potanthus rectifasciata*, Koh Kong, 18.06.2012; C) *Telicota colon stinga*, Preah Sihanouk, 3.01.2021; D) *Parnara bada bada*, Takeo, 26.06.2021; E) *Pelopidas assamensis*, Koh Kong, 31.08.2010; F) *Polytremis annama*, Siem Reap, 11.08.2017; G & H) *Baoris* sp., ca. *farri*, Koh Kong, 12.07.2013; I) *Caltoris cormasa*, Koh Kong, 25.07.2012; J) *Iton semamora semamora*, Koh Kong, 8.01.2015. A, B, E, G–J by G. Chartier; C, F by E. Smith; D by M. Jeanes. Licenses: D - CC BY NC; Others - CC BY. Not to scale.

Acknowledgements

We are very grateful to Yutaka Inayoshi for reviewing photographs published by Kosterin (2019a, 2019b, 2020) and all those included herein, and for his help resolving some taxonomic issues. We would also like to thank all of the reviewers of previous versions of this article. In particular, we thank Adam Cotton for helping us to resolve taxonomic issues and for liaising with Yutaka Inayoshi. We are grateful to Tek Lin Seow for helping us to identify some difficult butterfly species from photographs. We are also grateful to Eddie Smith and Dani Jump for allowing us to use their images, to Eddie for uploading his observations to iNaturalist (2022), and to Vladimir Dubatolov for helping with literature sources. The work of the second author was partly supported by the Russian State Scientific Project FWNR-2022-0019.

References

- Boullet, E. & Le Cerf, F. (1912) Descriptions sommaires de formes nouvelles de Papilionidae [Lep.] de la collection du Muséum de Paris (2e note). *Bulletin de la Société entomologique de France*, **1912**, 246–247.
- Chartier, G. (2019) Discovery of the genus *Hidari* Distant, 1886 (Lepidoptera: Hesperidae: Hesperinae) in Cambodia and life cycle of *Hidari bhawani* de Nicéville [1889]. *Cambodian Journal of Natural History*, **2019**, 121–127.
- Corbet, A.S. (1941) A key to the Indo-Malyan species of *Arhopala* Boisduval (Lepidoptera, Lycaenidae). *Proceedings of the Royal Entomological Society B*, **10**, 149–183.
- Corbet, A.S. & Pendlebury, H.M. (1992) *The Butterflies of the Malay Peninsula*. Malayan Nature Society, Kuala Lumpur, Malaysia.
- Cowan, C.F. (1967) The Indo-oriental tribe Cheritrini (Lepidoptera: Lycaenidae). *Bulletin of the British Museum of Natural History (Entomology)*, **20**, 75–103.
- Dubois, E. & Vitalis de Salvaza, R. (1914) Contribution a la "Faune Entomologique de l'Indochine Francaise". *Faune Entomologique de l'Indochine Francaise*, **58**, 146–151.
- Dubois, E. & Vitalis de Salvaza, R. (1919) Lepidopteres. Contribution a la "Faune Entomologique de l'Indochine Francaise". In *Essai d'un Traite D'Entomologie Indochinoise* (ed R. Vitalis de Salvaza), pp. 210–240. Imprimerie Minsang, Hanoi, Vietnam.
- Dubois, E., Vitalis de Salvaza, R. (1921) Contribution a la "Faune Entomologique de l'Indochine Francaise". *Faune Entomologique de l'Indochine Francaise*, **1921**, 7–26.
- Dubois, E., Vitalis de Salvaza, R. (1924) Contribution a la "Faune Entomologique de l'Indochine Francaise". *Faune Entomologique de l'Indochine Francaise*, **1924**, 27–47.
- Ek-Amnuay, P. (2012) *Butterflies of Thailand. Fascinating Insects, Vol. 2*. Amarin Printing and Publishing, Bangkok, Thailand.
- Eliot, J.N. (1990) Notes on the genus *Curetis* Hübner (Lepidoptera, Lycaenidae). *Tyô Ga*, **41**, 201–205.
- Evans, W.H. (1927) *The Identification of Indian Butterflies*. The Bombay Natural History Society, Madras, India.
- Evans, W.H. (1949) *A Catalogue of the Hesperidae from Europe, Asia and Australia in the British Museum (Natural History)*. Jarrold and Sons, Norwich, UK.
- Evans, W.H. (1957) A revision of the *Arhopala* group of Oriental Lycaenidae (Lepidoptera: Rhopalocera). *Bulletin of the British Museum (Natural History) Entomology*, **5**, 85–144.
- Fleishman, E. & Murphy, D.D. (2009) A realistic assessment of the indicator potential of butterflies and other charismatic groups. *Conservation Biology*, **23**, 1109–1116.
- Fruhstorfer, H. (1902) Verzeichnis der in Tonkin, Annam und Siam gesammelten Papilioniden und Besprechung verwandter Formen. *Berliner entomologische Zeitschrift*, **47**, 167–234.
- Fruhstorfer, H. (1910) Family *Pieridae*. In *Macrolepidoptera of the World 9. The Indo-Australian Rhopalocera* (ed A. Seitz), pp. 119–190. Alfred Kernen, Stuttgart, Germany.
- Fruhstorfer, H. (1911) Family *Amathusiidae*. In *Macrolepidoptera of the World 9. The Indo-Australian Rhopalocera* (ed A. Seitz), pp. 403–448. Alfred Kernen, Stuttgart, Germany.
- Fruhstorfer, H. (1913) Genus: *Euthalia* Hbn. In *Macrolepidoptera of the World 9. The Indo-Australian Rhopalocera* (ed A. Seitz), pp. 655–696. Alfred Kernen, Stuttgart, Germany.
- Fruhstorfer, H. (1914) Genus: *Eriboea* Hbn. In *Macrolepidoptera of the World 9. The Indo-Australian Rhopalocera* (ed A. Seitz), pp. 718–729. Alfred Kernen, Stuttgart, Germany.
- iNaturalist (2022) *iNaturalist*. <https://www.inaturalist.org>. [Accessed 10 October 2022].
- Inayoshi Y. (2022) *A Check List of Butterflies in Indo-China, Chiefly from Thailand, Laos and Vietnam*. <http://yutaka.it-n.jp> [Accessed 5 August 2022].
- Jump, D. (2022) *Nature*. <https://www.beesunlimited.com/photo-galleries/nature-photography> [Accessed 21 January 2022].
- Kosterin, O.E. (2019a) Occasional photographic records of butterflies (Lepidoptera, Papilionoidea) in Cambodia. 1. The coastal Cardamom foothills (SW Cambodia), 2010–2018. *Acta Biologica Sibirica*, **5**, 84–105.
- Kosterin, O.E. (2019b) Occasional photographic records of butterflies (Lepidoptera, Papilionoidea) in Cambodia. 2. Ratanakiri and Mondulakiri provinces of Eastern Cambodia, 2013–2018. *Acta Biologica Sibirica*, **5**, 21–37.
- Kosterin, O.E. (2020) Occasional photographic records of butterflies (Lepidoptera, Papilionoidea) in Cambodia. 3. Pursat, Siem Reap, Preah Vihear and Stung Treng Provinces in western, north-western and northern Cambodia. *Acta Biologica Sibirica*, **6**, 293–338.
- Monastyrskii, A.L. (2011) *Butterflies of Vietnam. Nymphalidae: Danainae, Amathusiinae*. Plan-o-rama Media Co. Ltd, Hanoi, Vietnam.
- Monastyrskii, A.L., Yago M. & Odagiri K. (2011) Butterfly assemblages (Lepidoptera, Papilionoidea) of the Cardamom Mountains, Southwest Cambodia. *Cambodian Journal of Natural History*, **2011**, 122–130.

- Morishita K. (1978) *Curetis acuta* and its allies. *Yadoriga*, **93/94**, 3–17 (in Japanese).
- Ohya T. (1983) *Birdwing Butterflies*. Kodansha, Tokyo, Japan.
- Onodera H. (2007) A trip for butterflies collecting in Cambodia (23 Sep.- 2 Oct. 2006). *Yadoriga*, **215**, 17–36 (in Japanese).
- Onodera H. (2008) My second trip for collecting butterflies in Cambodia (14–23 Sept. 2007). *Yuzuriha*, **39**, 54–61 (in Japanese).
- Onodera H. (2009) My second trip for collecting butterflies in Cambodia (14–23 Sept. 2007). *Yuzuriha*, **40**, 35–41 (in Japanese).
- Racheli, T. & Cotton, A.M. (2010) *Guide to the Butterflies of the Palearctic Region. Papilionidae, part 2. Subfamily Papilioninae*.

Tribe Troidini. Omnes Artes, Milano, Italy.

- Saito T., Saito K. & Inayoshi Y. (2011) New knowledge on the butterflies of Indochina. *Butterflies*, **58**, 48–51 (in Japanese).
- Seki Y., Takanami Y. & Otuka K. (1991) *Butterflies of Borneo Vol 2, No. 1 Lycaenidae*. Tobishima Corporation, Tokyo, Japan.
- Shirôzu T. & Saigusa T. (1962) Butterflies collected by the Osaka City University Biological Expedition to Southeast Asia 1957–58 (Part 1). *Nature Life Southeast Asia*, **2**, 25–94.
- Shirozu T. & Yata O. (1973) The genus *Eurema* of South Vietnam and Cambodia (Lepidoptera, Pieridae). *Sieboldia*, **4**, 121–135.
- Woodfield, E. & Murton, R. (2006) *Butterfly Field Guide Southwest Cambodia*. Frontier-Cambodia, Phnom Penh, Cambodia.

Annex 1 Annotated checklist of butterflies recorded in Cambodia

For each species, the Latin name, the source of the first record for Cambodia and a list of provinces where it has been recorded are provided.

Citations for first records are coded as follows: 1=Ohya (1983), 2=Fruhstorfer (1902), 3=Onodera (2007), 4=Racheli & Cotton (2010), 5=Monastyrskii *et al.* (2011), 6=Woodfield & Murton (2006), 7=Onodera (2008), 8=Dubois & Vitalis de Salvaza (1914), 9=Boullet & Le Cerf (1912), 10=Kosterin (2019a), 11=Dubois & Vitalis de Salvaza (1919), 12=Shirôzu & Yata (1973), 13=Kosterin (2020), 14=Kosterin (2019b), 15=Monastyrskii (2011), 16=Fruhstorfer (1910), 17=Dubois & Vitalis de Salvaza (1921), 18=Dubois & Vitalis de Salvaza (1924), 19=Fruhstorfer (1911), 20=Fruhstorfer (1914), 21=Onodera (2009), 22=Fruhstorfer (1913), 23=Morishita (1978), 24=Shirôzu & Saigusa (1962), 25=Saito *et al.* (2011), 26=Evans (1957), 27=Cowan (1967), 28=Chartier (2019).

Abbreviations for provinces are as follows: Bbg=Battambang, BM=Banteay Meanchey, KCM=Kampong Cham, KCG=Kampong Chhnang, Kdl=Kandal, KK=Koh Kong, Kpt=Kampot, KS=Kampong Speu, KT=Kampong Thom, Kte=Kratie, MK=Mondulakiri, OM=Oddar Meanchey, PS=Preah Sihanouk, PP=Phnom Penh, Pst=Pursat, PV=Preah Vihear, RK=Ratanakiri, SR=Siem Reap, ST=Stueng Treng, Tak=Takeo, TK=Tbong Kmoun (Fig. 10).

Newly recorded species are indicated with an asterisk after the scientific name and these entries cite the relevant figure in this article and the source of the best (or only) image(s). Where the source is iNaturalist, the reference is given in the format “iN/< ID>” (replace “iN” with “https://www.inaturalist.org/observations” to obtain the link). Where the source is Bees Unlimited, the

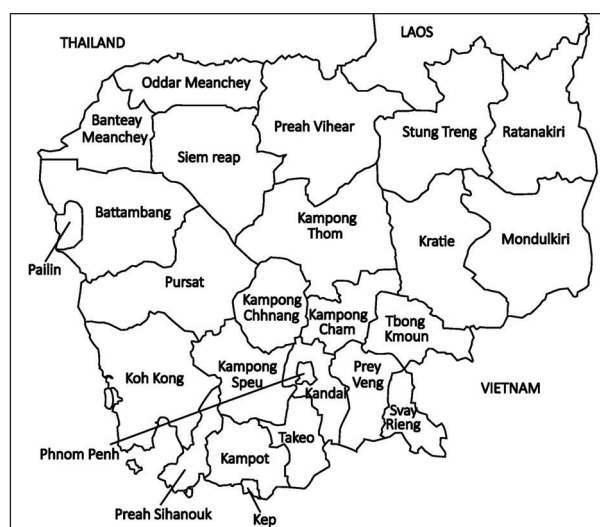


Fig. 10 Provinces of Cambodia. Note this map is simplified and depicts indicative rather than precise boundaries.

reference is given in the format “BU/post/<ID>” or “BU/photo/<ID>” (replace “BU” with “https://web.facebook.com/beesunlimited” to obtain the link). Data from both platforms were also taken into account with respect to butterfly species occurrence by provinces.

With a few exceptions, taxonomic treatments follow Inayoshi (2022), which currently provides the most comprehensive treatment for the Indochinese butterflies. It should be noted that the first records cited for many species used names other than those accepted by Inayoshi (2022) and here. Such cases are not commented on here and may be resolved by consulting Inayoshi (2022).

Annex 1 Cont'd

#	Scientific name	First record	Provinces	Fig No.
Papilionidae				
1	<i>Troides helena cerberus</i> (C. & R. Felder, 1865)	1	Kep, KK, KT	
2	<i>Troides aeacus aeacus</i> (C. & R. Felder, 1860)	2	Bbg, Kpt, MK, PP, PS, PV, SR	
3	<i>Atrophaneura varuna</i> (White, 1842)			
	ssp. <i>astorion</i> (Westwood, 1842)	3	RK	
	ssp. <i>zaleucus</i> (Hewitson, [1865])	4	West	
4	<i>Byasa adamsoni adamsoni</i> (Grose-Smith, 1886)	3	RK	
5	<i>Byasa polyeuctes polyeuctes</i> (Doubleday, 1842)	5	Pst	
6	<i>Losaria doubledayi doubledayi</i> (Wallace, 1865)	6	KK, PS, RK	
7	<i>Pachliopta aristolochiae goniopeltis</i> (Rothschild, 1908)	7	Bbg, Kdl, KK, Kte, MK, PP, Pst, RK, SR	
8	<i>Chilasa slateri marginata</i> (Oberthür, 1893)	5	Pst	
9	<i>Chilasa clytia clytia</i> (Linnaeus, 1758)	8	Bbg, Kep, KK, MK, PS, Pst, RK, SR	
10	<i>Chilasa paradoxa telearchus</i> (Hewitson, 1852)	8	KK, KT, ST	
11	<i>Papilio demoleus malayanus</i> Wallace, 1865	9	Bbg, KCg, Kdl, KK, Kep, MK, OM, PP, PS, Pst, PV, RK, SR, ST, Tak	
12	<i>Papilio demolion demolion</i> Cramer, 1776	6	KK, SR	
13	<i>Papilio castor mahadeva</i> Moore, [1879]	9	MK, PP, PS, Pst, SR	
14	<i>Papilio nephelus chaon</i> Westwood, 1845	9	KK, MK, Pst, SR	
15	<i>Papilio helenus helenus</i> Linnaeus, 1758	9	KK, Kpt, MK, Pst, RK	
16	<i>Papilio polytes romulus</i> Cramer, 1775	9	Kep, KK, Kdl, MK, PP, PS, Pst, RK, SR	
17	<i>Papilio memnon agenor</i> Linnaeus, 1758	6	KK, Kte, MK, PS, Pst, SR, RK, Tak	
18	<i>Papilio paris paris</i> Linnaeus, 1758	5	Pst, MK	
19	<i>Graphium sarpedon luctatius</i> (Fruhstorfer, 1907)	6	KK, MK, PS, Pst, RK, SR, Tak	
20	<i>Graphium doson actor</i> Fruhstorfer, 1907	6	KK, MK, PS, RK, SR, ST	
21	<i>Graphium eurypylus acheron</i> (Moore, 1885) *	iN/62626430	KK	1A
22	<i>Graphium agamemnon agamemnon</i> (Linnaeus, 1758)	6	Bbg, KK, MK, PP, PS, Pst, RK, SR, ST	
23	<i>Graphium arycles arycles</i> (Boisduval, 1836)	7	Btg, Kte, KK, PS, SR	
24	<i>Graphium antiphates nebulosus</i> (Butler, 1881)	6	Kep, Kpt, KK, MK, PS, RK, SR	
25	<i>Graphium nomius swinhoei</i> (Moore, 1878) *	iN/69452672	MK, SR	1B
26	<i>Graphium aristeus hermocrates</i> (C. & R. Felder, 1865)	5	Pst, SR	
27	<i>Graphium agetes agetes</i> (Westwood, 1843)	10	KK	
28	<i>Graphium macareus indochinensis</i> (Fruhstorfer, 1901)	5	Pst, SR	
29	<i>Graphium xenocles lindos</i> (Fruhstorfer, 1902)	6	KK, PS, Pst, SR	
30	<i>Graphium megarus megapenthes</i> (Fruhstorfer, 1902)	6	KK, PS, Pst, SR	
31	<i>Lamproptera curius curius</i> (Fabricius, 1787)	6	KK, Kpt, PS, Pst, SR	
32	<i>Lamproptera meges annamiticus</i> (Fruhstorfer, 1909)	6	Kep, KS, MK, PV, RK, SR, ST	
Pieridae				
Pierinae				
33	<i>Leptosia nina nina</i> (Fabricius, 1793)	6	KK, Kpt, PP, PS, Pst, RK, SR, ST	
34	<i>Delias vietnamensis pequini</i> Davenport, 2015	5	Pst	
35	<i>Delias pasithoe pasithoe</i> (Linnaeus, 1767)	6	KK, MK, PS, Pst, SR	

Annex 1 Cont'd

#	Scientific name	First record	Provinces	Fig No.
36	<i>Delias acalis shinkaii</i> Morita, 1998	5	MK, Pst	
37	<i>Delias descombesi descombesi</i> Boisduval, 1836	5	MK, PS, Pst	
38	<i>Delias agostina annamitica</i> Fruhstorfer, 1901	5	Pst	
39	<i>Delias hyparete indica</i> (Wallace, 1867)	5	KK, MK, PP, PS, Pst, SR, Tak	
40	<i>Cepora nerissa dapha</i> (Moore, [1879])	11	PV, RK, SR	
41	<i>Cepora nadina nadina</i> (Lucas, 1852)	6	KK, MK, Pst	
42	<i>Cepora iudith lea</i> (Doubleday, 1846)	11	Pst, RK, SR, ST	
43	<i>Prioneris philonome clemante</i> (Doubleday, 1846)	10	KK, Pst, RK	
44	<i>Prioneris thestylis thestylis</i> (Doubleday, 1842)	5	Pst	
45	<i>Appias olferna olferna</i> Swinhoe, 1890	5	BM, PP, Pst, SR, RK	
46	<i>Appias lycinda eleonora</i> (Boisduval, 1836)	3	Kdl, KK, Kpt, Kte, MK, Pst, RK, SR, ST	
47	<i>Appias albina darada</i> (C. & R. Felder, 1865)	5	Kep, KK, Kpt, Pst, RK, SR, ST	
48	<i>Appias paulina adamsoni</i> Moore, 1905	11	KK	
49	<i>Appias indra thronion</i> Fruhstorder, 1910	5	Pst	
50	<i>Ixias pyrene verna</i> Druce, 1874	11	Bbg, KK, MK, PV, RK, SR	
51	<i>Hebomoia glaucippe glaucippe</i> (Linnaeus, 1758)	5	Kep, KK, Pst, SR	
52	<i>Pareronia anais anais</i> Lesson, 1837	3	Bbg, Kep, KK, PV, RK, SR	
Coliadinae				
53	<i>Catopsilia scylla cornelia</i> (Fabricius, 1787)	6	Kep, KK, RK, SR	
54	<i>Catopsilia pyranthe pyranthe</i> (Linnaeus, 1758)	3	KK, PP, RK, SR	
55	<i>Catopsilia pomona pomona</i> (Fabricius, 1775)	6	Kdl, Kep, KK, Kpt, MK, OM, PP, PS, RK, SR, ST	
56	<i>Dercas verhuelli doubledayi</i> Moore, [1905]	7	MK	
57	<i>Gandaca harina burmana</i> Moore, 1906	3	KK, Kte, PS, SR	
58	<i>Eurema brigitta hainana</i> (Moore, 1878)	6	KK, OM, PV, SR	
59	<i>Eurema laeta pseudolaeta</i> (Moore, 1906)	5	Pst	
60	<i>Eurema hecabe hecabe</i> (Linnaeus, 1758)	3	Bbg, KK, Kte, MK, PP, PS, PV, RK, SR, ST	
61	<i>Eurema blanda silhetana</i> (Wallace, 1867)	7	KK, MK, Tak	
62	<i>Eurema simulatrix sarinoides</i> (Fruhstorfer, 1910)	12	KK, Kpt, MK	
63	<i>Eurema sari sodalis</i> (Moore, 1886)	12	KK, Kpt, PS, SR	
64	<i>Eurema andersoni sadanobui</i> Shirôzu & Yata, 1982	12	KK, Kte, MK, SR	
65	<i>Eurema novapallida</i> Yata, 1992	5	Pst	
66	<i>Eurema ada indosinica</i> Yata, 1991	5	KK, Pst	
Nymphalidae				
Danainae				
67	<i>Danaus chrysippus chrysippus</i> (Linnaeus, 1758)	13	Bbg, Kte, PP, PS, PV, SR, Tak	
68	<i>Danaus genutia genutia</i> (Cramer, 1779)	5	Bbg, KCg, KK, Kte, MK, PP, PS, Pst, RK, SR	
69	<i>Danaus affinis malayana</i> (Fruhstorfer, 1899)	10	KK	
70	<i>Danaus melanippus hegesippus</i> (Cramer, 1777)	6	KK, PS, PV, SR	
71	<i>Tirumala gautama gautama</i> (Moore, 1877)	3	RK	
72	<i>Tirumala limniace limniace</i> (Cramer, 1775)	14	MK, ST	

Annex 1 Cont'd

#	Scientific name	First record	Provinces	Fig No.
73	<i>Tirumala septentrionis septentrionis</i> (Butler, 1874)	5	Kep, KK, MK, Pst, PV, RK, SR	
74	<i>Parantica aglea melanoides</i> Moore, 1883	6	Kep, KK, MK, RK, SR, ST	
75	<i>Parantica agleoides agleoides</i> (C. & R. Felder, 1860)	15	KK, PS	
76	<i>Parantica aspasia aspasia</i> (Fabricius, 1787)	5	KK, Pst	
77	<i>Parantica melaneus</i> (Cramer, 1775)	11	MK	
78	<i>Parantica swinhoei szechuana</i> (Fruhstorfer, 1899)	5	Pst	
79	<i>Parantica sita sita</i> (Kollar, [1844])	5	Pst	
80	<i>Ideopsis similis persimilis</i> (Moore, 1879)	11	PS, SR	
81	<i>Ideopsis vulgaris contigua</i> Talbot, 1939	14	KK, PS, SR	
82	<i>Euploea modesta modesta</i> Butler, 1866	16	KK, PV, SR, ST	
83	<i>Euploea crameri praedicabilis</i> Fruhstorfer, 1914	5	Pst, KK	
84	<i>Euploea camaralzeman caramalzeman</i> Butler, 1866	6	KK, SR	
85	<i>Euploea core godarti</i> Lucas, 1853	6	Kep, KK, Kpt, MK, PP, PS, RK, SR, ST	
86	<i>Euploea algea limborgii</i> Moore, [1879]	7	MK, PV, RK, SR, ST	
87	<i>Euploea doubledayi doubledayi</i> (C. & R. Felder, 1860)	3	MK, RK, SR	
88	<i>Euploea eyndhovii gardineri</i> (Fruhstorfer, 1898)	3	KK, MK, PS, RK, SR, ST	
89	<i>Euploea sylvester harrisii</i> C. & R. Felder, 1865	17	KK, MK, PP, Pst, PV, SR	
90	<i>Euploea mulciber mulciber</i> (Cramer, 1777)	6	Kep, KK, KS, MK, PS, RK, SR	
91	<i>Euploea phaenareta castelnaui</i> C. & R. Felder, 1865	10	KK, PS	
92	<i>Euploea midamus chloe</i> (Guérin-Méneville, [1843])	17	KK, PP, RK	
93	<i>Euploea klugii erichsonii</i> (C. & R. Felder, 1865)	3	SR	
94	<i>Euploea radamanthus radamanthus</i> (Fabricius, 1793)	11	KK, MK, Pst, RK	
Satyrinae				
95	<i>Melanitis leda leda</i> (Linnaeus, 1758)	6	Btg, Kep, KK, MK, PP, PS, Pst, PV, RK, SR	
96	<i>Melanitis phedima ganapati</i> Fruhstorfer, 1908 *	iN/68723543	ST	1C
97	<i>Elymnias hypermnestra meridionalis</i> Fruhstorfer, 1902	6	Kep, KK, Kpt, MK, PS, Pst, PV, SR	
98	<i>Elymnias patna patna</i> (Westwood, 1851)	5	KK, Pst	
99	<i>Elymnias nesaea apelles</i> Fruhstorfer, 1902	6	KK, Pst, RK, SR	
100	<i>Elymnias malelas</i> (Hewitson, 1863)	3	Pst, RK	
101	<i>Elymnias vasudeva</i> Moore, [1858] *	iN/64500919	MK	1D
102	<i>Lethe europa niladana</i> Fruhstorfer, 1911	11	KK, Pst, SR	
103	<i>Lethe rohria rohria</i> (Fabricius, 1787)	14	MK	
104	<i>Lethe confusa confusa</i> Aurivillius, [1898]	5	Pst	
105	<i>Lethe mekara crijnana</i> Fruhstorfer, 1911	10	KK	
106	<i>Lethe chandica suvarna</i> Fruhstorfer, 1908	5	Pst	
107	<i>Lethe vindhya vindhya</i> (C. & R. Felder, 1859)	5	Pst	
108	<i>Lethe kansa</i> (Moore, 1857)	5	Pst	
109	<i>Lethe minerva tritogeneia</i> Fruhstorfer, 1911	5	KK, Pst, RK	
110	<i>Penthema darlisa mimetica</i> Lathy, 1900	6	KK, Pst	
111	<i>Orsotriaena medus medus</i> (Fabricius, 1775)	6	Kep, KK, OM, Pst, PV, RK, SR, ST	
112	<i>Mycalesis mnasicles perna</i> Fruhstorfer, 1906	6	KK	

Annex 1 Cont'd

#	Scientific name	First record	Provinces	Fig No.
113	<i>Mycalesis sangaica tunicula</i> Fruhstorfer, 1911	3	RK	
114	<i>Mycalesis perseus tabitha</i> (Fabricius, 1793)	3	KK, MK, Pst, PV, RK, ST	
115	<i>Mycalesis perseoides perseoides</i> (Moore, [1892])	3	KK, Pst, RK, SR	
116	<i>Mycalesis mineus</i> (Linnaeus, 1758)	3	Kte, MK, Pst, RK	
117	<i>Mycalesis intermedia</i> (Moore, [1892])	3	Kep, KK, MK, RK, SR	
118	<i>Mycalesis gotama charaka</i> Moore, 1874	5	Pst	
119	<i>Mycalesis anaxias aemate</i> Fruhstorfer (1911)	6	KK, Pst	
120	<i>Mycalesis anaxioides</i> Marshall & Nicéville, 1883	10	KK	
121	<i>Mycalesis annamitica annamitica</i> Fruhstorfer, 1906	7	MK	
122	<i>Mycalesis lepcha kohimensis</i> Tytler, 1914	5	Pst	
123	<i>Coelites nothis nothis</i> Westwood, 1850	14	RK	
124	<i>Erites medura rotundata</i> Nicéville, 1893 *	iN/51369698	Kte	1E
125	<i>Erites falcipennis</i> Wood-Mason & Nicéville, 1883	5	Pst	
126	<i>Ragadia crisilda</i> Hewitson, 1862	5	KS, Pst	
127	<i>Ypthima baldus baldus</i> (Fabricius, 1775)	3	Kep, KK, MK, Pst, PV, RK, SR	
128	<i>Ypthima singorensis indosinica</i> Uémura & Monastyrskii, 2004	3	MK, Pst, RK	
129	<i>Ypthima nebulosa</i> Aoki & Uémura, 1982	5	Pst	
130	<i>Ypthima lisandra lisandra</i> (Cramer, 1780)	5	Pst	
131	<i>Ypthima savara</i> Grose-Smith, 1887	18	KK, PP, Pst	
132	<i>Ypthima norma annamitica</i> Fruhstorfer, 1911	5	MK, Pst	
133	<i>Ypthima huebneri</i> Kirby, 1871	7	KK, MK, PS, SR	
134	<i>Faunis canens arcesilas</i> Stichel, 1933	5	Pst	
135	<i>Melanocyma faunula kimurai</i> Saitoh, 2003	19	KK, Pst	
136	<i>Stichophthalma cambodia</i> (Hewitson, [1862])	11	KK, MK, Pst	
137	<i>Amathusia phidippus phidippus</i> (Linnaeus, 1763)	11	KK, MK, PS, Pst, SR	
138	<i>Amathuxidia amythaon annamensis</i> Talbot, 1932	5	Pst, SR	
139	<i>Zeuxidia masoni tannowai</i> Saito & Kimura, 2016	6	KK	
140	<i>Thaumantis diores</i> Doubleday, 1845	5	Pst	
	<i>Thauria</i> Moore, 1894 sp. *	BU/photos/ 733830503358661	SR	1F
141	<i>Discophora sondaica zal</i> Westwood, [1861] *	iN/62459713 iN/62459708	KK, SR	1G-H
142	<i>Discophora aestheta</i> Monastyrskii & Devyatkin, 2003	6 ¹	KK	
143	<i>Discophora deo fruhstorferi</i> Stichel, 1901	5	Pst	
144	<i>Discophora timora timora</i> Westwood, [1850]	10	KK	
145	<i>Enispe euthymius congi</i> Saito, 2015	5 ²	Pst	
Charaxinae				
146	<i>Polyura schreiber assamensis</i> (Rothschild, 1899)	6	KK, Pst, SR	
147	<i>Polyura delphis delphis</i> (Doubleday, 1843) *	iN/61935221	KK, MK	2A
148	<i>Polyura jalysus jalysus</i> (C. & R. Felder, [1867]) *	iN/61935688	KK, SR	2B
149	<i>Polyura athamas athamas</i> (Drury, [1773])	5	KK, Kpt, MK, PS, Pst, RK, SR	

Annex 1 Cont'd

#	Scientific name	First record	Provinces	Fig No.
150	<i>Polyura arja arja</i> (C. & R. Felder, 1867)	6	KK, MK, RK, SR	
151	<i>Polyura eudamippus nigrobasalis</i> Lathy, 1898	20	PP	
152	<i>Charaxes solon sulphureus</i> Rothschild, 1900	21	KK, MK, SR	
153	<i>Charaxes durnfordi</i> Distant, 1884	5	Pst	
154	<i>Charaxes bernardus hierax</i> C. & R. Felder, [1867]	6	KK, Kte, MK, PV, SR, ST	
Heliconiinae				
155	<i>Acraea terpsicore</i> (Linnaeus, 1758)	21	KK, Kpt, Kte, PP, PS, RK, SR	
156	<i>Cupha erymanthis erymanthis</i> (Drury, [1773])	6	Kep, KK, MK, PS, RK, SR, ST	
157	<i>Phalanta phalantha phalantha</i> (Drury, 1773)	5	PS, Pst, PV, SR	
158	<i>Phalanta alcippe alcippoides</i> (Moore, 1900)	11	Pst	
159	<i>Vagrans sinha sinha</i> (Kollar, [1884])	5	KCg, KK, MK, Pst	
160	<i>Vindula erota erota</i> (Fabricius, 1798)	6	KK, Kpt, MK, Pst, SR	
161	<i>Vindula dejone erotella</i> (Butler, [1879])	3	RK, SR	
162	<i>Cirrochroa tyche mithila</i> Moore, 1872	6	KK, MK, Pst, RK, SR, ST, Tak	
163	<i>Cirrochroa surya siamensis</i> Fruhstorfer, 1906	13	SR, PV	
164	<i>Cirrochroa emalea emalea</i> (Guérin-Méneville, [1843]) *	iN/69917641	Pst	2C
165	<i>Algia fasciata fasciata</i> (C. & R. Felder, 1860)	5	Pst, SR	
166	<i>Terinos terpander intermedia</i> Godfrey, 1916	6	KK, PS, PV, RK	
167	<i>Terinos clarissa militum</i> Oberthür, 1897	5	KK, Pst, RK	
168	<i>Cethosia biblis biblis</i> (Drury, 1773) *	iN/62176842	KK	2D
169	<i>Cethosia cyane euanthes</i> (Fruhstorfer, 1912)	3	KCg, Kep, KK, Kpt, MK, PS, Pst, PV, SR, ST, Tak	
Limnitiidinae				
170	<i>Pantoporia hordonia hordonia</i> (Stoll, 1790)	3	KK, MK, PS, Pst, PV, SR, RK	
171	<i>Pantoporia sandaka davidsoni</i> Eliot, 1969	7	KK, MK, Pst, PV, SR, ST	
172	<i>Pantoporia paraka paraka</i> (Butler, [1879])	3	KK, SR, ST	
173	<i>Lasippa camboja</i> (Moore, 1879)	11	KK, MK, PS, SR	
174	<i>Lasippa monata monata</i> (Weyenbergh, 1874) *	iN/68261443	SR	2E
175	<i>Neptis clinia susruta</i> Moore, 1872	5	KK, Pst, SR	
176	<i>Neptis hylas kamarupa</i> Moore, 1875	3	Bbg, Kep, KK, KT, MK, PP, PS, Pst, PV, RK, SR, ST	
177	<i>Neptis soma shania</i> Evans, 1924	5	Pst	
178	<i>Neptis nata adipala</i> Moore, 1872	3	KK, MK, RK, SR	
179	<i>Neptis leucoporos cresina</i> Fruhstorfer, 1908	5	Pst, ST	
180	<i>Neptis harita preeyai</i> Kimura, 1993 *	BU/posts/ 5469051613169836	KK, SR	2F
181	<i>Neptis ilira cindia</i> Eliot, 1969 *	iN/62386022	KK	2G
182	<i>Neptis miah nolana</i> Druce, 1874 *	iN/39646852	SR	2H
183	<i>Neptis cartica</i> Moore, 1872	5	KK, Pst, SR	
184	<i>Neptis magadha magadha</i> C. & R. Felder, [1867]	3	KK, MK, SR	
185	<i>Neptis anjana</i> Moore, 1881	5	Pst	
186	<i>Phaedyma columella martabana</i> (Moore, 1881)	6	KK, Pst, SR, ST	

Annex 1 Cont'd

#	Scientific name	First record	Provinces	Fig No.
187	<i>Athyma pravara indosinica</i> Fruhstorfer, 1906	5	Pst	
188	<i>Athyma perius perius</i> (Linnaeus, 1758)	6	KCg, KK, MK, PS, Pst, RK, SR	
189	<i>Athyma kanwa phorkys</i> (Fruhstorfer, 1912)	5	KK, Pst	
190	<i>Athyma ranga obsolescens</i> (Fruhstorfer, 1906)	13	KK, SR, ST	
191	<i>Athyma selenophora bahula</i> Moore, [1858]	11	KK, Pst, SR	
192	<i>Athyma zeroca galaesus</i> (Fruhstorfer, 1912)	11	Pst	
193	<i>Athyma cama camasa</i> (Fruhstorfer, 1906)	18	Pst	
194	<i>Athyma nefte asita</i> Moore, [1858]	3	KK, Pst, SR	
195	<i>Athyma sinope sinope</i> (Moore, [1858]) *	iN/62386907	KK	2I
196	<i>Sumalia daraxa daraxa</i> (Doubleday, 1848)	5	Pst	
197	<i>Tacola larymna siamensis</i> (Fruhstorfer, 1906)	5	KK, Pst	
198	<i>Moduza procris procris</i> Cramer, 1777	6	KK, Kte, MK, PS, SR, ST	
199	<i>Parthenos sylvia sylla</i> (Westwood, 1838)	6	KK, MK, Pst, RK, SR, ST	
200	<i>Lebadea martha martha</i> (Fabricius, 1787)	6	Kep, KK, Kpt, MK, PS, Pst, PV, RK, SR, ST, Tak	
201	<i>Tanaecia julii julii</i> (Lesson, 1837)	6	Kep, KK, Kpt, MK, PS, Pst, SR, ST	
202	<i>Tanaecia jahnu</i> (Moore, [1858])	6	KK, Kte, Pst, PV, SR	
203	<i>Cynitia lepidea cognata</i> Moore, [1897]	22	KK, Pst, PS, PV, SR, ST	
204	<i>Cynitia cocytus ambrysus</i> (Fruhstorfer, 1913)	11	KK, MK, SR	
205	<i>Euthalia djata siamica</i> Riley & Godfrey, 1925	7	KK, MK, SR	
206	<i>Euthalia lubentina lubentina</i> (Cramer, 1777)	6	KK, Pst, SR	
207	<i>Euthalia malaccana malaccana</i> Fruhstorfer, 1899	10	KK	
208	<i>Euthalia anosia anosia</i> (Moore, [1858])	3	KK, SR	
209	<i>Euthalia eriphylae lioneli</i> Fruhstorfer, 1905	3	SR	
210	<i>Euthalia phemius phemius</i> (Doubleday, [1848])	10	Kep, KK, MK	
211	<i>Euthalia aconthea garuda</i> (Moore, 1858)	5	BM, Keo, KK, PS, Pst, PV, SR	
212	<i>Euthalia alpheda verena</i> Fruhstorfer, 1913	5	KK, Pst, MK	
213	<i>Euthalia monina kesava</i> (Moore, 1859)	22	KK, SR	
214	<i>Euthalia monilis</i> (Moore, [1897])	13	SR	
215	<i>Euthalia evelina annamita</i> (Moore, 1879)	6	KK, PS, SR	
216	<i>Lexias albopunctata albopunctata</i> (Crowley, 1895)	6	KK, Pst, PV, SR, ST, Tak	
217	<i>Lexias pardalis jadeitina</i> (Fruhstorfer, 1913)	21	KK, MK, Pst, PV, RK, SR, ST	
Cyrestinae				
218	<i>Cyrestis themire</i> Honarh, 1884	10	KK, SR, MK	
219	<i>Cyrestis cocles cocles</i> (Fabricius, 1787)	3	Kpt, Pst, RK, SR	
220	<i>Cyrestis thyodamas thyodamas</i> Doyère, 1840	5	Kpt, Pst, SR	
221	<i>Chersonesia risa risa</i> (Doubleday, [1848])	5	KK, Pst	
222	<i>Chersonesia intermedia rahrioides</i> Moore, [1899]	5	KK, Pst, SR	
Pseudergolinae				
223	<i>Dichorragia nesimachus nesimachus</i> (Doyère, 1840)	5	Pst	

Annex 1 Cont'd

#	Scientific name	First record	Provinces	Fig No.
Biblidinae				
224	<i>Ariadne ariadne pallidior</i> (Fruhstorfer, 1899)	11	Kte, PS, Pst, RK, SR	
225	<i>Ariadne specularia arca</i> (Fruhstorfer, 1906)	5	Kep, KK, Pst, RK, SR	
226	<i>Ariadne merione tapestrina</i> (Moore, 1884)	5	KK, MK, Pst, SR, ST	
Apaturinae				
227	<i>Rohana parisatis pseudosiamensis</i> Nguyen-Phung, 1985	5	Pst, SR	
228	<i>Euripus nyctelius nyctelius</i> (Doubleday, 1845)	14	KK, MK, PV, SR	
Nymphalinae				
229	<i>Kaniska canace canace</i> (Linnaeus, 1763)	5	MK, Pst, SR	
230	<i>Symbrenthia lilaea lilaea</i> (Hewitson, 1864)	5	Pst	
231	<i>Symbrenthia hypselis cotanda</i> Moore, 1874	5	Pst	
232	<i>Yoma sabina vasuki</i> Doherty, [1886]	14	MK, SR, ST	
233	<i>Hypolimnas bolina jacintha</i> (Drury, [1773])	5	BM, KCg, Kdl, Kep, KK, Kpt, MK, PP, PS, Pst, RK, SR	
234	<i>Hypolimnas misippus</i> (Linnaeus, 1764) *	iN/68268027	SR, Bbg	3A
235	<i>Junonia iphita iphita</i> (Cramer, 1779)	7	KK, MK, Pst, PV, RK, SR	
236	<i>Junonia atlites atlites</i> (Linnaeus, 1763)	6	Bbg, KCm, Kep, KK, Kpt, KS, KT, MK, PP, Pst, RK, SR, ST, Tak	
237	<i>Junonia almana almana</i> (Linnaeus, 1758)	6	Bbg, KCg, Kep, KK, Kte, MK, PP, PS, Pst, PV, RK, SR, ST, Tak	
238	<i>Junonia lemonias lemonias</i> (Linnaeus, 1758)	7	Bbg, Kep, KK, MK, PP, Pst, RK, SR, ST	
239	<i>Junonia orithya ocyale</i> (Hübner, 1819)	6	KCg, Kep, KK, MK, PS, RK, SR, ST, Tak	
240	<i>Junonia hierta hierta</i> (Fabricius, 1798)	14	MK, PS, RK, SR	
241	<i>Kallima inachus alboinachus</i> Nakamura & Wakahara, 2013	14	MK	
242	<i>Kallima alicia kishii</i> Nakamura & Wakahara, 2014 ³	5	Pst	
243	<i>Doleschallia bisaltide siamensis</i> Fruhstorfer, 1912	13	PS, SR	
Libytheinae				
244	<i>Libythea myrrha sanguinalis</i> Fruhstorfer, 1898 *	iN/67512948	SR	3B
245	<i>Libythea narina rohini</i> Marshall, [1881]	5	Pst, SR	
Riodinidae				
246	<i>Zemeros flegyas flegyas</i> (Cramer, [1780])	5	Kep, KK, MK, PS, Pst	
247	<i>Dodona deodata deodata</i> Hewitson, 1876	5	Pst	
248	<i>Abisara echerius paionea</i> Fruhstorfer, 1914	10	KK	
249	<i>Abisara bifasciata angulata</i> Moore, [1879]	14	RK	
250	<i>Abisara latifasciata</i> Inoué & Kawazoé, 1965	3	MK	
251	<i>Abisara saturata meta</i> Fruhstorfer, [1904] *	BU/photos/ 521711341237246	PV, SR	3C
252	<i>Archigenes neophron gratius</i> Fruhstorfer, 1912	5	KK, Pst	
253	<i>Paralaxita telesia bouletti</i> (Fruhstorfer, 1914) *	iN/69917778	MK	3D
254	<i>Laxita thuisto ephorus</i> (Fruhstorfer, [1904]) *	iN/61288667	KK	3E

Annex 1 Cont'd

#	Scientific name	First record	Provinces	Fig No.
255	<i>Taxila haquinus berthae</i> Fruhstorfer, 1904	6	KK, Kpt, PS, Pst	
256	<i>Stiboges nymphidia nymphidia</i> Butler, 1876	5	Pst	
Lycaenidae				
Poritinae				
257	<i>Poritia erycinoides elsiei</i> Evans, 1925	14 ⁴	MK	
258	<i>Poritia hewitsoni tavoyana</i> Doherty, 1889	13	KK, ST	
259	<i>Simiskina phalia potina</i> (Hewitson, 1874) *	iN/61286547	KK	3F
Miletinae				
260	<i>Liphyra brassolis brassolis</i> Westwood, [1864] *	BU/photos/ 637780946296951	SR	3G
261	<i>Miletus chinensis learchus</i> C. & R. Felder, 1865	5	KK, Pst, SR	
262	<i>Miletus mallus mallus</i> (Fruhstorfer, 1913)	5	KK, Pst	
263	<i>Miletus ancon siamensis</i> (Godfrey, 1916)	13	SR	
264	<i>Allotinus unicolor rekkia</i> Riley & Godfrey, 1921	3	KK, PS, Pst, SR	
265	<i>Allotinus substrigosus substrigosus</i> (Moore, 1884) *	iN/60783790	KK	3H
266	<i>Logania marmorata marmorata</i> Moore, 1884	5	KK, Pst	
267	<i>Spalgis epius epius</i> (Westwood, [1851]) *	BU/posts/ 5977438032331189	KK, SR	3I
Curetinae				
268	<i>Curetis bulis bulis</i> (Westwood, [1851])	7	KK, SR	
269	<i>Curetis metayei</i> Inoué & Kawazoé, 1965	23	?	
270	<i>Curetis saronis indosinica</i> Fruhstorfer, 1908	7	KK, MK, PP, SR	
Polyommatainae				
271	<i>Castalius rosimon rosimon</i> (Fabricius, 1775)	24	Bbg, Kep, KK, MK, PP, PS, Pst, PV, RK, SR, ST	
272	<i>Tarucus callinara</i> Butler, 1886	25	KS	
273	<i>Discolampa ethion ethion</i> (Westwood, [1851])	3	KK, MK, Pst, RK, SR	
274	<i>Caleta roxus roxana</i> (Nicéville, 1897)	3	KK, MK, Pst, RK, SR	
275	<i>Caleta elna noliteia</i> (Fruhstorfer, 1918)	7	MK, SR	
276	<i>Caleta decidia decidia</i> (Hewitson, [1876])	7	MK	
277	<i>Everes lacturnus rileyi</i> Godfrey, 1916	7	KK, PS, MK, Pst, SR	
278	<i>Pithecopus corvus correctus</i> Cowan, 1966	5	MK, Pst	
279	<i>Neopithecopus zalmora zalmora</i> (Butler, [1870])	24	KK, MK, PS, Pst, PV, RK, SR	
280	<i>Megisba malaya sikkima</i> Moore, 1884	7	KK, MK, Pst, SR	
281	<i>Lestranicus transpectus</i> (Moore, 1879)	5	Pst	
282	<i>Udara dilecta dilecta</i> (Moore, 1879)	5	Pst	
283	<i>Udara placidula howarthi</i> (Cantlie & Norman, 1960)	5	Pst	
284	<i>Udara selma cerima</i> (Corbet, 1937)	10	Kpt	
285	<i>Udara albocaerulea albocaerulea</i> (Moore, 1879)	5	Pst	
286	<i>Acytolepis puspa gisca</i> (Fruhstorfer, 1910)	6	KK, MK, Pst, RK, SR, ST	
287	<i>Celatoxia marginata marginata</i> (Nicéville, [1884])	5	Pst	
288	<i>Celastrina lavendularis limbata</i> (Moore, 1879)	5	KK, MK, Pst	

Annex 1 Cont'd

#	Scientific name	First record	Provinces	Fig No.
289	<i>Callenya melaena melaena</i> (Doherty, 1889) ⁵	5	Pst	
290	<i>Zizina otis sangra</i> (Moore, [1866])	3	KK, MK, PP, PS, Pst, PV, RK, SR	
291	<i>Pseudozizeeria maha maha</i> (Kollar, 1844)	14	MK	
292	<i>Zizeeria karsandra</i> (Moore, 1865)	10	Kdl, Kep, KK, PP, PS, SR	
293	<i>Zizula hylax hylax</i> (Fabricius, 1775)	5	Bbg, Kep, PP, PS, Pst, SR	
294	<i>Famegana nisa</i> (Wallace & Moore, 1866) *	iN/67509510	SR	4A
295	<i>Freyeria putli</i> (Kollar, [1844]) *	iN/67509507	PV, SR	4B
296	<i>Freyeria trochylus orientalis</i> (Forster, 1980) *	iN/39569324	Kdl	4C
297	<i>Chilades lajus lajus</i> (Stoll, 1780)	3	Pst, MK, PP, SR	
298	<i>Chilades pandava pandava</i> (Horsfield, [1829])	24	Bbg, BM, Kep, KT, MK, PP, PS, SR, ST	
299	<i>Euchrysops cnejus</i> (Fabricius, 1798)	5	Bbg, KK, Pst, PV, SR, ST	
300	<i>Catochrysops strabo strabo</i> (Fabricius, 1793)	21	KK, PS, Pst, MK, SR, ST	
301	<i>Catochrysops panormus exiguus</i> (Distant, 1886)	7	KK, MK, Pst, ST	
302	<i>Leptotes plinius plinius</i> (Fabricius, 1793)	7	Kte, MK, Pst, SR	
303	<i>Lampides boeticus</i> (Linnaeus, 1758)	10	Bbg, KK, MK	
304	<i>Jamides bochus bochus</i> (Stoll, 1782) *	iN/60971906	KK, MK, SR	4D
305	<i>Jamides celeno aelianus</i> (Fabricius, 1793)	24	Kep, KK, MK, SR, ST, PV	
306	<i>Jamides pura pura</i> (Moore, 1886)	3	KK, RK, SR	
307	<i>Jamides philatus subditus</i> (Moore, 1886)	5	KK, Pst	
308	<i>Jamides alecto alocina</i> Swinhoe, 1915	3	Kep, KK, Kte, PS, Pst, RK	
309	<i>Nacaduba pactolus continentalis</i> Fruhstorfer, 1916 *	iN/61186740	KK	4E
310	<i>Nacaduba solta</i> Eliot, 1955	5	Pst	
311	<i>Nacaduba subperusia lysa</i> Fruhstorfer, 1916	5	KK, Pst	
312	<i>Nacaduba sanaya elioti</i> Corbet, 1938	5	KK, Pst, SR	
313	<i>Nacaduba kurava euplea</i> Fruhstorfer, 1916	5	KK, Pst	
314	<i>Nacaduba beroe gythion</i> Fruhstorfer, 1916	5	KK, MK, Pst	
315	<i>Nacaduba berenice aphyra</i> Fruhstorfer, 1916	21	KK, MK, SR	
316	<i>Nacaduba calauria</i> (C. Felder, 1860)	5	Pst	
317	<i>Nacaduba kirtoni</i> Eliot, 1984	5	Pst	
318	<i>Ionolyce helicon merguiana</i> (Moore, 1884)	5	KK, Pst	
319	<i>Prosotas aluta coelestis</i> (Wood-Mason & Niceville, [1887])	13	SR	
320	<i>Prosotas bhutea bhutea</i> (Nicéville, [1884])	5	Pst	
321	<i>Prosotas nora ardates</i> (Moore, 1874)	3	KK, PP, Pst, SR, ST	
322	<i>Prosotas pia marginata</i> Tite, 1963	5	Pst	
323	<i>Prosotas dubiosa indica</i> (Evans, 1925)	21	KK, PP, SR, ST	
324	<i>Prosotas lutea sivoka</i> (Evans, 1910) *	iN/67565123	SR	4F
325	<i>Una usta usta</i> (Distant, 1886)	7	KK, MK	
326	<i>Anthene emolus emolus</i> (Godart, 1824)	24	KK, MK, PS, PV, RK, SR, ST	
327	<i>Anthene lycaenina lycambes</i> (Hewitson, [1878]) *	iN/60805458	KK, Kpt	4G
328	<i>Anthene licates dusuntua</i> Corbet, 1940	13	KK, SR	

Annex 1 Cont'd

#	Scientific name	First record	Provinces	Fig No.
Lycaeninae				
329	<i>Heliophorus epicles latilimbata</i> (Fruhstorfer, 1908)	5	Pst	
Aphnaeinae				
330	<i>Spindasis vulcanus tavoyanus</i> Evans, 1925	3	RK, ST	
331	<i>Spindasis syama peguanus</i> (Moore, 1884)	3	Kep, PV, RK, SR, ST	
332	<i>Spindasis lohita himalayana</i> (Moore, 1884)	10	KK, MK, PP, PS, PV, SR, ST, Tak	
Theclinae				
333	<i>Arhopala centaurus nakula</i> (C. & R. Felder, 1860)	3	Btg, KK, Kpt, MK, PP, PS, PV, RK, SR, ST, Tak	
334	<i>Arhopala anthelus</i> (Westwood, 1852)	21	KK, KS, SR, ST	
335	<i>Arhopala camdana</i> Corbet, 1941	13	KK	
336	<i>Arhopala bazaloides bazaloides</i> (Hewitson, 1878)	10	PS	
337	<i>Arhopala atosia jahara</i> Corbet, 1941	10	KK, Pst	
338	<i>Arhopala allata atarana</i> (Tytler, 1926)	13	SR	
339	<i>Arhopala moolaiana maya</i> (Evans, 1932)	13	Pst	
340	<i>Arhopala perimuta perimuta</i> (Moore, 1858)	6	KK, MK, PS, Pst, SR	
341	<i>Arhopala elopura</i> Druce, 1894	14	KK, MK, PS, PV, SR, ST	
342	<i>Arhopala alitaeus mirabella</i> Doherty, 1889	10	KK, SR, ST	
343	<i>Arhopala aida aida</i> Nicéville, 1889	10	Kep, KK, Kpt, PS, SR	
344	<i>Arhopala atrax</i> (Hewitson, 1862)	13	PV, SR, ST	
345	<i>Arhopala agrata binghami</i> Corbet, 1946	13	KK, Pst	
346	<i>Arhopala milleri</i> Corbet, 1941 *	iN/61449629	KK	4H
347	<i>Arhopala nicevillei</i> Bethune-Baker, 1903	14	MK	
348	<i>Arhopala cleander regia</i> (Evans, 1825)	5	Pst	
349	<i>Arhopala athada apha</i> Nicéville, 1895	7	KK, SR	
350	<i>Arhopala silhetensis silhetensis</i> (Hewitson, 1862)	13	KK, SR	
351	<i>Arhopala agaba</i> (Hewitson, 1862)	5	Pst, SR	
352	<i>Arhopala paralea</i> (Evans, 1925)	5	Pst	
353	<i>Arhopala arvina aboe</i> Nicéville, 1895	5	Pst	
354	<i>Arhopala alesia sacharja</i> Fruhstorfer, 1914	13	PV, SR	
355	<i>Arhopala asinarus asinarus</i> C. & R. Felder, 1865 *	iN/38325269	SR	4I
356	<i>Arhopala eumolphus eumolphus</i> (Cramer, 1780)	7	MK, SR	
357	<i>Arhopala hellenore hellenore</i> Doherty, 1889	26	KK, Pst	
358	<i>Arhopala corinda corestes</i> Corbet, 1941 *	iN/61451144	KK	4J
359	<i>Arhopala paraganesa zephyretta</i> (Doherty, 1891)	5	Pst	
360	<i>Arhopala ammonides ammonides</i> (Doherty, 1891)	13	Pst	
361	<i>Flos abseus indicus</i> (Riley, 1923)	10	KK	
362	<i>Flos diardi diardi</i> (Hewitson, 1862)	5	KK, PS, Pst, SR	
363	<i>Flos fulgida fulgida</i> (Hewitson, [1863])	26	KK	
364	<i>Flos apidanus ahamus</i> Doherty, 1891	5	KK, Pst	
365	<i>Flos areste</i> (Hewitson, 1862)	5	Pst	
366	<i>Flos asoka</i> (Nicéville, [1884]) *	iN/61649400	KK	4K

Annex 1 Cont'd

#	Scientific name	First record	Provinces	Fig No.
367	<i>Semanga superba siamensis</i> Talbot, 1936	5	KK, Pst	
368	<i>Surendra quercetorum quercetorum</i> (Moore, 1858)	3	MK, Pst, RK, SR	
369	<i>Surendra vivarna neritos</i> (Fruhstorfer, 1907)	5	KK, Pst	
370	<i>Zinaspia todara karennia</i> (Evans, 1925) *	BU ⁶	SR	4L
371	<i>Iraota timoleon timoleon</i> (Stoll, 1790)	7	MK, Pst	
372	<i>Iraota rochana pandara</i> Fruhstorfer, 1907	21	KK, MK	
373	<i>Amblypodia anita anita</i> Hewitson, 1862	7	KK, MK, SR	
374	<i>Catapaecilma major albicans</i> Corbet, 1941 *	iN/61465744	KK	4M
375	<i>Drina donina donina</i> (Hewitson, 1865)	5	Pst	
376	<i>Neomyrina hiemalis</i> (Distant & Salvin, 1878)	3	KK, MK, RK, SR	
377	<i>Loxura atymnus continentalis</i> Fruhstorfer, [1912]	6	Kep, KK, MK, PS, Pst, PV, RK, SR	
378	<i>Loxura cassiopea</i> Distant, 1884	5	KK, Pst	
379	<i>Yasoda tripunctata tripunctata</i> (Hewitson, 1863)	6	KK, MK, PS, Pst, SR	
380	<i>Thamala marciiana</i> (Hewitson, [1863])	21	SR	
381	<i>Cheritra freja evansi</i> Cowan, 1965	3	KK, Kte, MK, PS, Pst, RK, SR, ST	
382	<i>Ticherra acte acte</i> (Moore, [1858])	27	?	
383	<i>Ahmetia achaja achaja</i> (Fruhstorfer, [1912])	14	RK	
384	<i>Drupadia ravindra boisduvalii</i> Moore, 1884	6	KK, Pst, SR	
385	<i>Drupadia theda fabricii</i> Moore, 1884	13	KK, SR, ST	
386	<i>Horaga syrinx moulmeina</i> Moore, [1884]	5	Pst	
	<i>Dacalana</i> Moore, 1884 sp *	iN/61571413	KK	4N
387	<i>Pratapa icetoides icetoides</i> (Elwes, [1893])	5	Pst	
388	<i>Tajuria cippus cippus</i> (Fabricius, 1798)	5	KK, Pst	
389	<i>Bullis buto buto</i> (Nicéville, 1895) *	iN/71545620	MK	4O
390	<i>Rachana jalindra indra</i> (Moore, 1884)	6	KK, Pst	
391	<i>Neocheritra fabronia fabronia</i> (Hewitson, [1878]) *	iN/67510129	SR	5A
392	<i>Suasa lisides</i> (Hewitson, [1863]) *	iN/61765378	KK	5B
393	<i>Remelana jangala ravata</i> (Moore, [1866])	3	KK, SR	
394	<i>Ancema blanka minturna</i> (Fruhstorfer, [1912]) *	iN/68261656	SR	5C
395	<i>Hypolycaena thecloides thecloides</i> (C. & R. Felder, 1860)	25	KK, KS, MK	
396	<i>Hypolycaena erylus himavantus</i> Fruhstorfer, 1912	24	KK, Kpt, MK, PS, Pst, PV, RK, SR, ST	
397	<i>Hypolycaena amasa amasa</i> (Hewitson, [1865])	6	KK, Kpt, MK, PS, Pst, RK, SR, ST	
398	<i>Hypolycaena othona othona</i> Hewitson, [1865]	6	KK	
399	<i>Deudorix epijarbas epijarbas</i> (Moore, [1858])	5	Pst	
400	<i>Artipe eryx eryx</i> (Linnaeus, 1771)	5	Pst	
401	<i>Virachola perse perse</i> (Hewitson, [1863]) *	iN/68261618	SR	5D
402	<i>Virachola smilis</i> (Hewitson, [1863])	5	Pst	
403	<i>Virachola kessuma</i> (Horsfield, 1829)	14	MK, SR	
404	<i>Sinthusia nasaka amba</i> Kirby, 1878	10	Kpt	
405	<i>Sinthusia chandrana margala</i> Fruhstorfer, [1912]	14	MK	

Annex 1 Cont'd

#	Scientific name	First record	Provinces	Fig No.
406	<i>Bindahara phocides phocides</i> (Fabricius, 1793) *	iN/61465415	KK	5E
407	<i>Rapala duma duma</i> (Hewitson, [1878])	5	Pst	
408	<i>Rapala pheretima petosiris</i> (Hewitson, 1863)	3	KK, MK, PS, RK, SR	
409	<i>Rapala suffusa suffusa</i> (Moore, [1879]) *	iN/61763659	KK	5F
410	<i>Rapala persephone</i> Saito, 2011 ⁷	21	SR	
411	<i>Rapala damona</i> Swinhoe, 1890	7	MK	
412	<i>Rapala dienece dienece</i> (Hewitson, [1878])	7	KK, MK, PV, ST	
413	<i>Rapala iarbus iarbus</i> (Fabricius, 1787)	3	KK, MK, RK, SR	
414	<i>Rapala manea schistacea</i> (Moore, 1879)	5	KK, MK, Pst, SR	
415	<i>Rapala scintilla scintilla</i> Nicéville, 1890	5	Pst	
416	<i>Rapala varuna orseis</i> Hewitson, [1863]	5	Pst, SR	
417	<i>Araotes lapithis lapithis</i> (Moore, [1858]) *	iN/40752780	SR	5G
Hesperiidae				
Coeliadinae				
418	<i>Burara oedipodea belesis</i> (Mabille, 1876)	13	SR	
419	<i>Burara jaina margana</i> Fruhstorfer, 1911 *	iN/36818296	KK	6A
420	<i>Burara etelka etelka</i> (Hewitson, [1867]) *	iN/36818228	KK, SR	6B
421	<i>Burara harisa harisa</i> (Moore, [1866])	10	KK, PS	
422	<i>Burara gomata gomata</i> (Moore, [1866]) *	BU/posts/ 4386592534749088	SR	6C
423	<i>Bibasis mahintha</i> (Moore, [1875]) *	BU/posts/ 4283746771700332	SR	6D-E
424	<i>Bibasis sena sena</i> (Moore, 1866)	14	RK, SR	
425	<i>Hasora proxissima siamica</i> Evans, 1932	21	KK, SR, ST	
426	<i>Hasora chromus chromus</i> (Cramer, 1780)	13	KK, ST	
427	<i>Hasora malayana malayana</i> (C. & R. Felder, 1860)	21	KK, SR	
428	<i>Hasora schoenherr gaspa</i> Evans, 1949 *	iN/47829737	KK	6F
429	<i>Hasora badra badra</i> (Moore, [1858]) *	iN/47818219	KK, SR	6G
430	<i>Hasora vitta indica</i> Evans, 1932 *	iN/47833688	KK	6H
431	<i>Hasora leucospila leucospila</i> (Mabille, 1891) *	iN/47818669	KK	6I
432	<i>Badamia exclamationis</i> (Fabricius, 1775)	10	KK, PV, SR, ST	
Pyrginae				
433	<i>Capila phanaeus</i> (Hewitson, 1867) *			
	ssp. <i>decoloris</i> Inoué & Kawazoé 1964 *	BU/photos/ 6092573990817592	SR	6J
	ssp. <i>falta</i> Evans, 1949 *	iN/60591557	KK	6K
434	<i>Capila hainana hainana</i> Crowley, 1900 *	iN/60590674 iN/60590675	KK	6L-M
435	<i>Celaenorrhinus asmara consertus</i> Nicéville, 1890	3	SR	
436	<i>Odina decorata</i> (Hewitson, 1867)	10	KK, SR	
437	<i>Pseudocoladenia dan dhyana</i> (Fruhstorfer, 1909)	13	SR	
438	<i>Coladenia indrani uposathra</i> Fruhstorfer, 1910 *	iN/68261376	SR	6N

Annex 1 Cont'd

#	Scientific name	First record	Provinces	Fig No.
439	<i>Sarangesa dasahara dasahara</i> (Moore, [1866])	7	MK, PV	
440	<i>Chamunda chamunda</i> (Moore, [1866]) *	iN/60592598	KK	6O
441	<i>Gerosis bhagava bhagava</i> (Moore, [1866]) *	iN/69917674	SR	6P
442	<i>Gerosis limax dirae</i> (Nicéville, 1895) *	iN/60592753	KK	7A
443	<i>Tagiades japetus ravi</i> (Moore, 1866)	3	Kep, KK, Kpt, PS, PV, SR, ST	
444	<i>Tagiades gana meetana</i> Moore, 1879	3	Kep, KK, MK, PS, SR	
445	<i>Tagiades parra gala</i> Evans, 1949 *	iN/60595441	KK	7B
446	<i>Tagiades vajuna vajuna</i> Fruhstorfer, 1910	3	KK, RK, SR	
447	<i>Tagiades menaka menaka</i> (Moore, 1866)	10	Kpt	
448	<i>Odontoptilum angulata angulata</i> (C. Felder, 1862)	3	KT, MK, PS, RK, SR	
449	<i>Caprona agama agama</i> (Moore, 1858)	14	BM, KK, PV, RK, SR	
450	<i>Caprona alida alida</i> (Nicéville, 1891)	14	MK, SR	
451	<i>Spialia galba chenga</i> Evans, 1957 *	iN/40753344	BM, SR	7C
Hesperiinae				
452	<i>Astictopterus jama olivascens</i> Moore, 1878	3	Kep, KK, KT, MK, PS, RK	
453	<i>Ampittia dioscorides camertes</i> (Hewitson, 1868)	7	KK, Kpt, MK, PS, SR	
454	<i>Aeromachus dubius impha</i> Evans, 1943	7	MK	
455	<i>Thoressa masoni</i> (Moore, 1878)	10	KK, RK	
456	<i>Thoressa cerata</i> (Hewitson, 1876) *	iN/136898988	MK	7D
457	<i>Halpe porus</i> (Mabille, [1877])	3	KK, RK	
458	<i>Pithauria stramineipennis stramineipennis</i> Wood-Mason & Nicéville, [1887] *	iN/48199329	KK	7E-F
459	<i>Iambrix salsala salsala</i> (Moore, [1866])	24	Kep, KK, MK, PS, PV, RK, SR, ST	
460	<i>Koruthaialos rubecula hector</i> Watson, 1893	3	PV, RK	
461	<i>Koruthaialos sindu sindu</i> (C. & R. Felder, 1860)	13	Pst	
462	<i>Psolos fuligo subfasciatus</i> (Moore, 1879)	3	Kep, KK, PV, RK, SR	
463	<i>Ancistroides nigrita maura</i> (Snellen [1880])	10	KK, MK, PS, SR	
464	<i>Notocrypta paralyos asawa</i> Fruhstorfer, 1911	3	Kep, KK, MK, PS, PV, RK, SR	
465	<i>Notocrypta clavata theba</i> Evans, 1949 *	iN/47977921	KK	7G
466	<i>Notocrypta curvifascia curvifascia</i> (C. & R. Felder, 1862)	3	KK, RK, SR	
467	<i>Udaspes folus</i> (Cramer, 1775)	10	KK, PS, PV, RK, SR, ST	
468	<i>Scobura phiditia</i> (Hewitson, [1866]) *	iN/60422495	KK	7H
469	<i>Scobura isota</i> (Swinhoe, 1893) *	iN/60419731	KK	7I
470	<i>Suada swerga suava</i> Evans, 1949 *	iN/60489764	KK	7J
471	<i>Suastus gremius gremius</i> (Fabricius, 1798)	24	PP, PS, SR, ST	
472	<i>Suastus minutus aditia</i> Evans, 1943	10	KK, SR	
473	<i>Cupitha purreea</i> (Moore, 1877) *	iN/52785876	KK, SR	7K
474	<i>Zographetus satwa</i> (Nicéville, [1884]) *	iN/60495928	KK	7L
475	<i>Hyarotis adrastus praba</i> (Moore, 1860)	10	KK, PS, SR, ST	
476	<i>Isma protoclea bicolor</i> Evans, 1926 *	iN/57723782	KK	7M

Annex 1 Cont'd

#	Scientific name	First record	Provinces	Fig No.
477	<i>Pyroneura callineura natalia</i> Devyatkin et Monastyrskii, 2003 *	iN/60316287	KK	7N
478	<i>Pyroneura margherita miriam</i> (Evans, 1941) *	iN/60401243	KK, Kpt	7O-P
479	<i>Plastingia naga</i> (Nicéville, 1884) *	iN/60305787	KK, SR	8A
480	<i>Salanoemia tavoyana</i> (Evans, 1926) *	iN/40685335	KK, SR	8B
481	<i>Salanoemia sala</i> (Hewitson, [1866]) *	iN/60401679	KK	8C
482	<i>Lotongus calathus</i> balta Evans, 1949	10	KK	
483	<i>Zela zeus optima</i> (Fruhstorfer, 1911) *	iN/60493675	KK	8D
484	<i>Gangara thyrasis thyrasis</i> (Fabricius, 1775)	14	KK, RK, SR	
485	<i>Gangara lebadea lebadea</i> (Hewitson, 1868)	10	KK	
486	<i>Erionota torus</i> Evans, 1941	10	Kep, KK	
487	<i>Erionota acroleuca apicalis</i> Evans, 1932 *	iN/52786781	Kpt, KK	8E
488	<i>Matapa aria</i> (Moore, 1866)	10	KK, PS, SR	
489	<i>Matapa sasivarna</i> (Moore, 1866)	10	KK	
490	<i>Matapa cresta</i> Evans, 1949 *	iN/59417955	KK	8F
491	<i>Unkana ambasa attina</i> (Hewitson, [1866]) *	iN/39524635	KK, SR	8G
492	<i>Hidari irava</i> (Moore, [1858])	28	KK	
493	<i>Hidari bhawani</i> Nicéville, [1889]	28	KK, SR	
494	<i>Acerbas anthea pista</i> Evans, 1949 *	iN/51678952	KK	8H-I
495	<i>Pirdana hyela rudolphii</i> Elwes & Nicéville, 1887	10	KK, Kpt, SR	
496	<i>Pirdana distanti spenda</i> Evans, 1949 *	iN/59546656	KK	8J
497	<i>Taractrocera maevius sagara</i> (Moore, [1866]) *	iN/59339360	PS	8K
498	<i>Taractrocera archias quinta</i> Swinhoe, 1913	3	Bbg, RK	
499	<i>Oriens gola pseudolus</i> (Mabille, 1883) *	iN/60502656 iN/60502632	KK, PS, TK	8L-M
500	<i>Potanthus rectifasciata</i> (Elwes & Edwards, 1897) *	iN/60515424	KK	9A-B
501	<i>Potanthus omaha omaha</i> (Edwards, 1863)	3	?	
502	<i>Telicota colon stinga</i> Evans, 1949 *	iN/67510901	Bbg, Kte, PS, SR	9C
503	<i>Cephrenes acalle oceanica</i> (Mabille, 1904)	10	KK, PP, SR	
504	<i>Parnara ganga</i> Evans, 1837	13	SR	
505	<i>Parnara bada bada</i> (Moore, 1878) *	iN/88930383	Tak	9D
506	<i>Borbo cinnara</i> (Wallace, 1866)	13	KK, MK, SR	
507	<i>Pelopidas assamensis</i> Nicéville, 1882 *	iN/51676491	KK	9E
508	<i>Pelopidas mathias mathias</i> (Fabricius, 1798)	21	Bbg, Kep, KK, PS, SR	
509	<i>Polytremis lubricans lubricans</i> (Herrich-Schaeffer, 1869)	10	KK, PS	
510	<i>Polytremis annama</i> Evans, 1937 *	iN/40685450	SR	9F
	<i>Baoris</i> Moore, 1881 sp., ca. <i>B. farri</i> *	iN/48213640	KK	9G-H
511	<i>Caltoris cormasa</i> (Hewitson, 1876) *	iN/48206053	KK	9I
512	<i>Iton semamora semamora</i> (Moore, [1866]) *	iN/104701651	KK	9J

¹ Originally reported at genus level, listed by Inayoshi (2022) at species level. ² Originally reported as *Enispe duranius* Fruhstorfer, 1911, listed as *E. euthymius congi* Saito, 2015 by Inayoshi (2022). ³ Originally reported as *Kallima inachus siamensis* Fruhstorfer, [1913], re-identified by A. Monastyrskii (pers. comm.). ⁴ Reported as sub. *P. cf. hewitsoni*. ⁵ Originally recorded as *Callenya lenya lenya* (Evans, 1932) by Monastyrskii et al. (2011); listed as *C. melaena melaena* by Inayoshi (2022). ⁶ << <https://www.beesunlimited.com/images/nature-folder/butterflies-landscape/butterflies-landscape-045DSCN2090.jpg> >>. ⁷ Originally reported as *Rapala hades* (Nicéville, 1895)